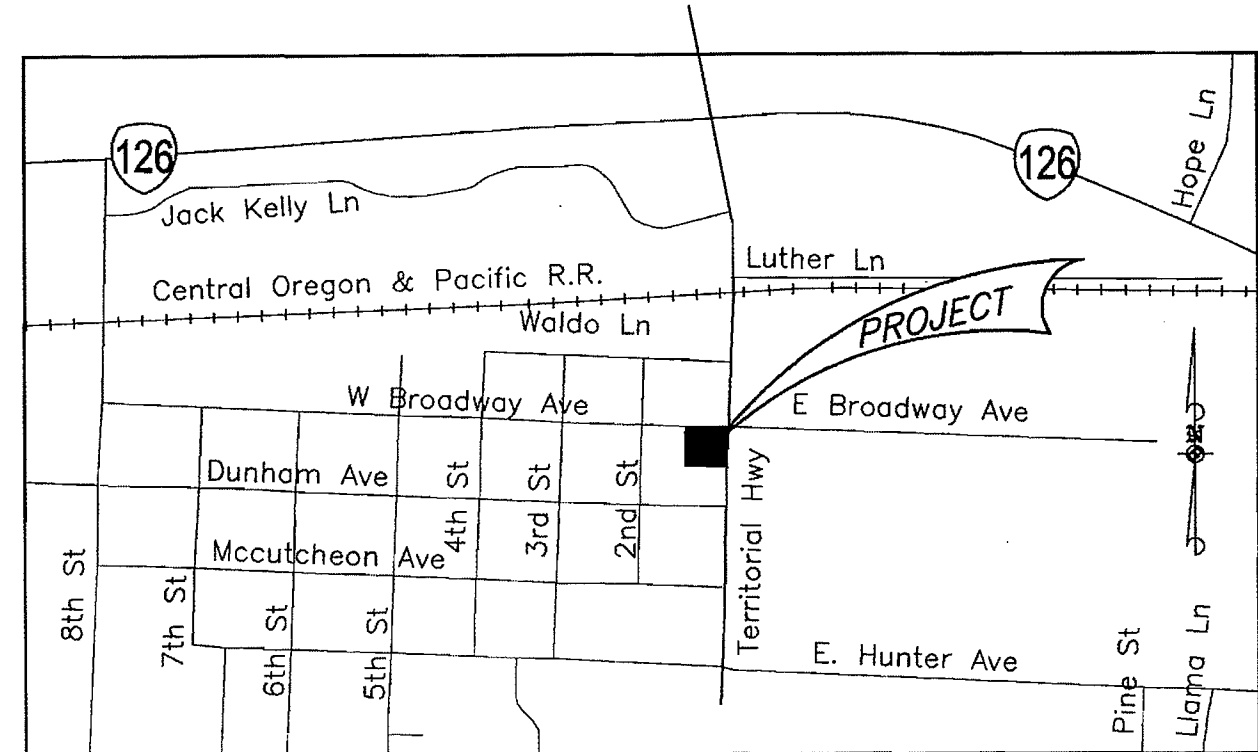
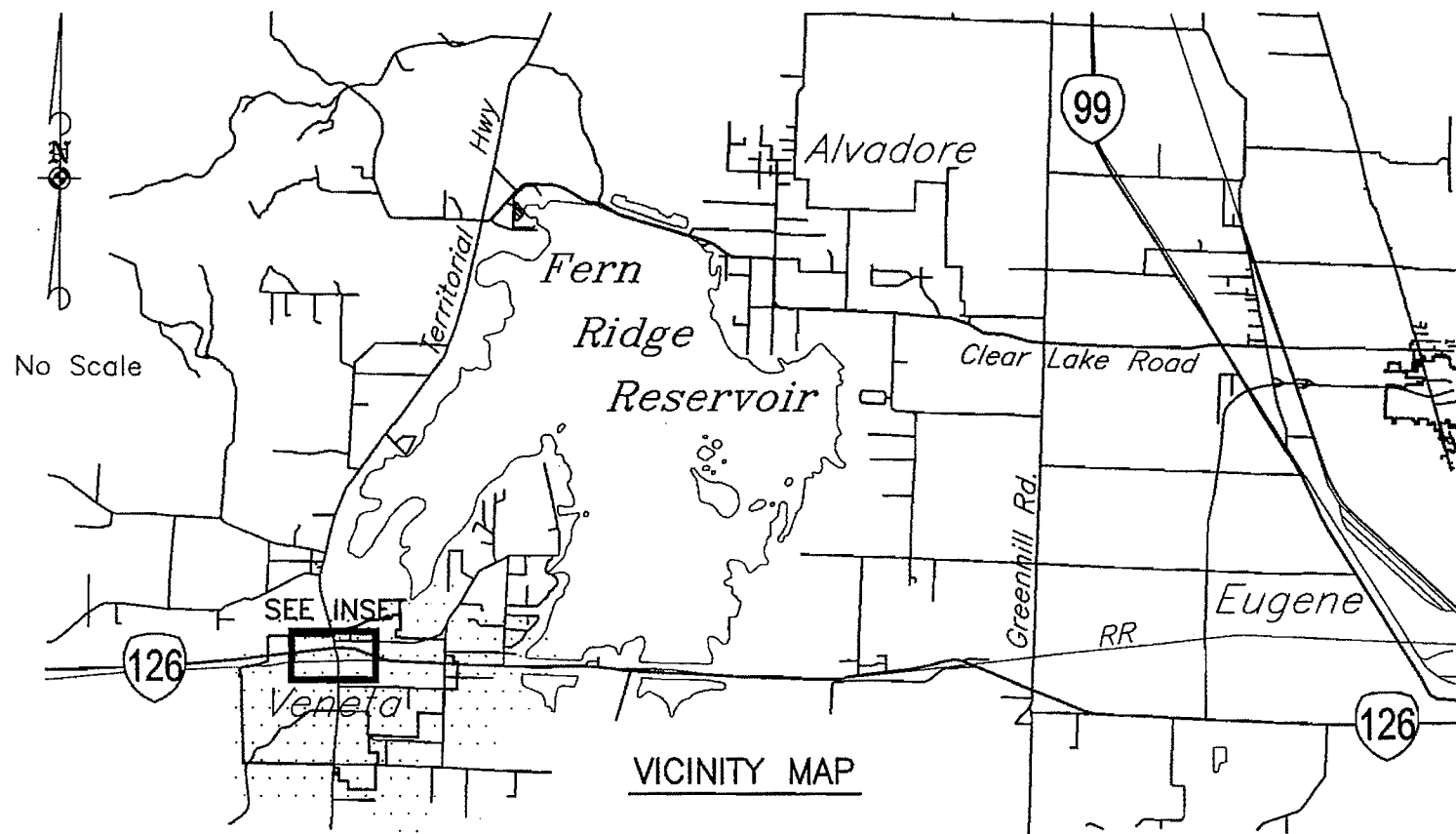


LANE TRANSIT DISTRICT

PLANS FOR PROPOSED PROJECT
GRADING, DRAINAGE, PAVING, ILLUMINATION, AND LANDSCAPING

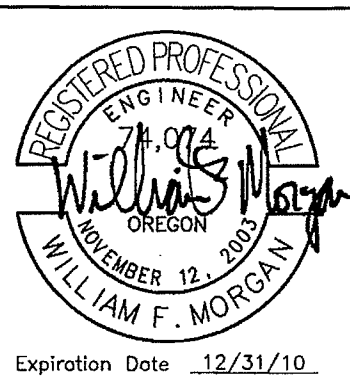
VENETA TRANSIT CENTER

VENETA, OREGON
June 2010

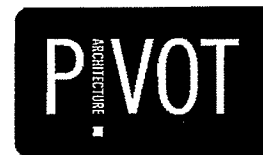


ATTENTION
Oregon Law Requires You To Follow Rules
Adopted By The Oregon Utility Notification Center. 1-800-332-2344
Those Rules Are Set Forth In OAR 952-001-0010 Through
OAR 952-001-0090. You May Obtain Copies Of The Rules From The Center.

DESIGN TEAM



CIVIL & SURVEYING
ENGINEERING & CONSTRUCTION SERVICES
LANE COUNTY PUBLIC WORKS
3040 NORTH DELTA HIGHWAY
EUGENE, OREGON 97408

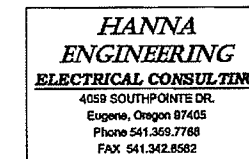


ARCHITECT
72 WEST BROADWAY
EUGENE, OREGON 97401



DOUGHERTY
LANDSCAPE
ARCHITECTS
www.DLAdesign.com
P 541.683.5803
F 541.683.8183

LANDSCAPE ARCHITECT

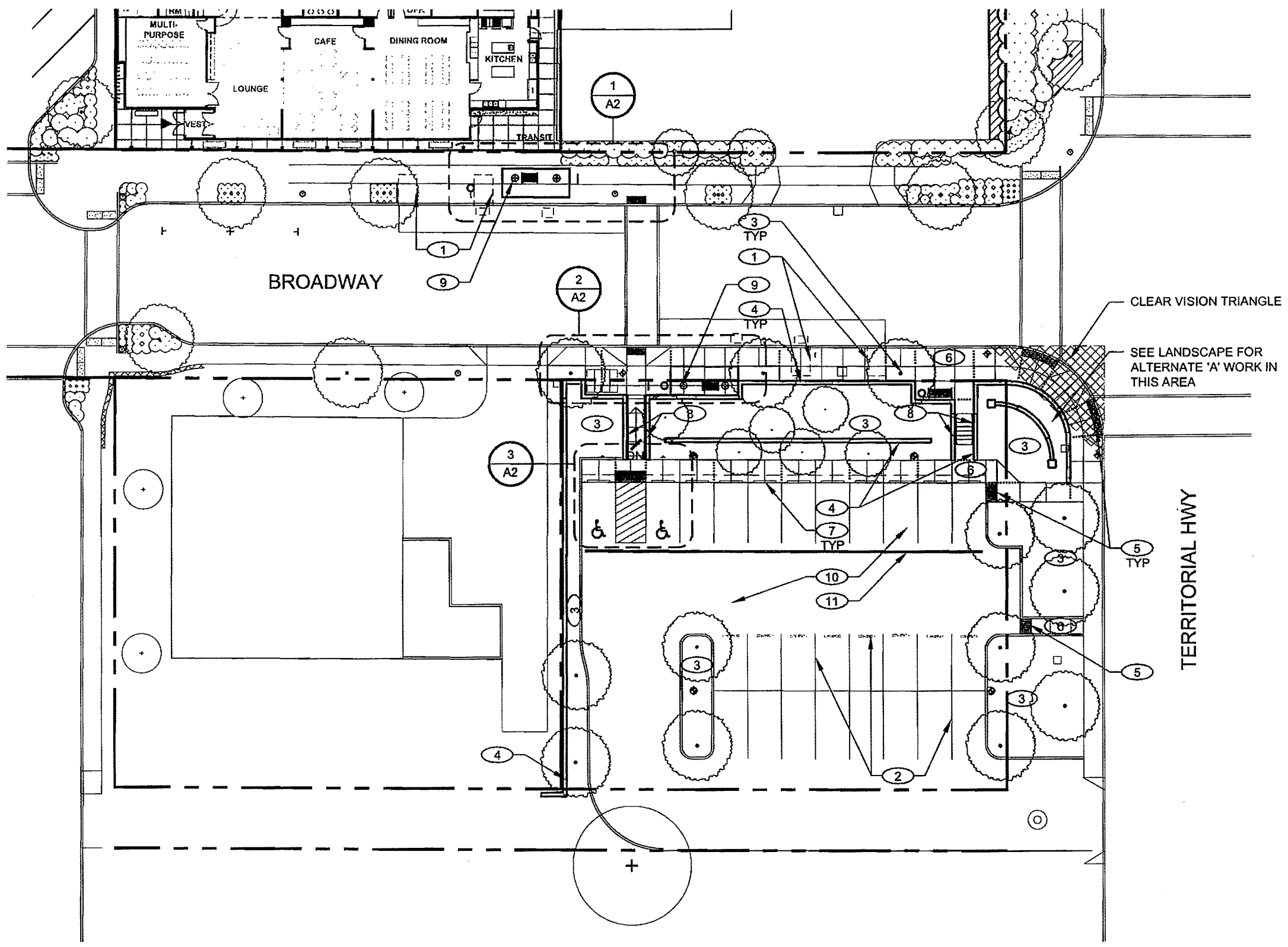


ELECTRICAL ENGINEER

LTD BOARD OF DIRECTORS

DORIS TOWERY
MIKE EYSTER
MICHAEL DUBICK
ED NECKER
GARY GILLESPIE
GREG EVANS
DEAN KORTGE

CONTRACT NO.
ACCOUNT NO. 360587705



KEY NOTES

- ① ACCESSIBLE BUS BOARDING AREA
- ② TRAFFIC STRIPING - SEE CIVIL STRIPING PLAN
- ③ PLANT BED - SEE LANDSCAPE
- ④ SITE WALL - SEE CIVIL WALL SCHEDULE. SEE SHEET A4 FOR JOINTING AND SKATE STOP LOCATIONS.
- ⑤ DETECTABLE WARNING - SEE CIVIL
- ⑥ SIDEWALK - SEE JOINT DETAILS ON A3 AND JOINT LAYOUT ON A4
- ⑦ WHEEL STOP - SEE CIVIL STRIPING PLAN
- ⑧ HANDRAIL AT STEPS/RAMP - SEE A5
- ⑨ BUS SHELTER - SEE A11-A16
- ⑩ PCC SURFACING - SEE CIVIL
- ⑪ CHANNEL DRAIN - SEE CIVIL

LEGEND

- ◆ LIGHT POLE PER TRANSIT CENTER PROJECT, TYP.
- LIGHT POLE PER STREETSCAPE PROJECT, TYP.

1 SITE PLAN

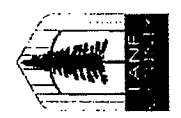
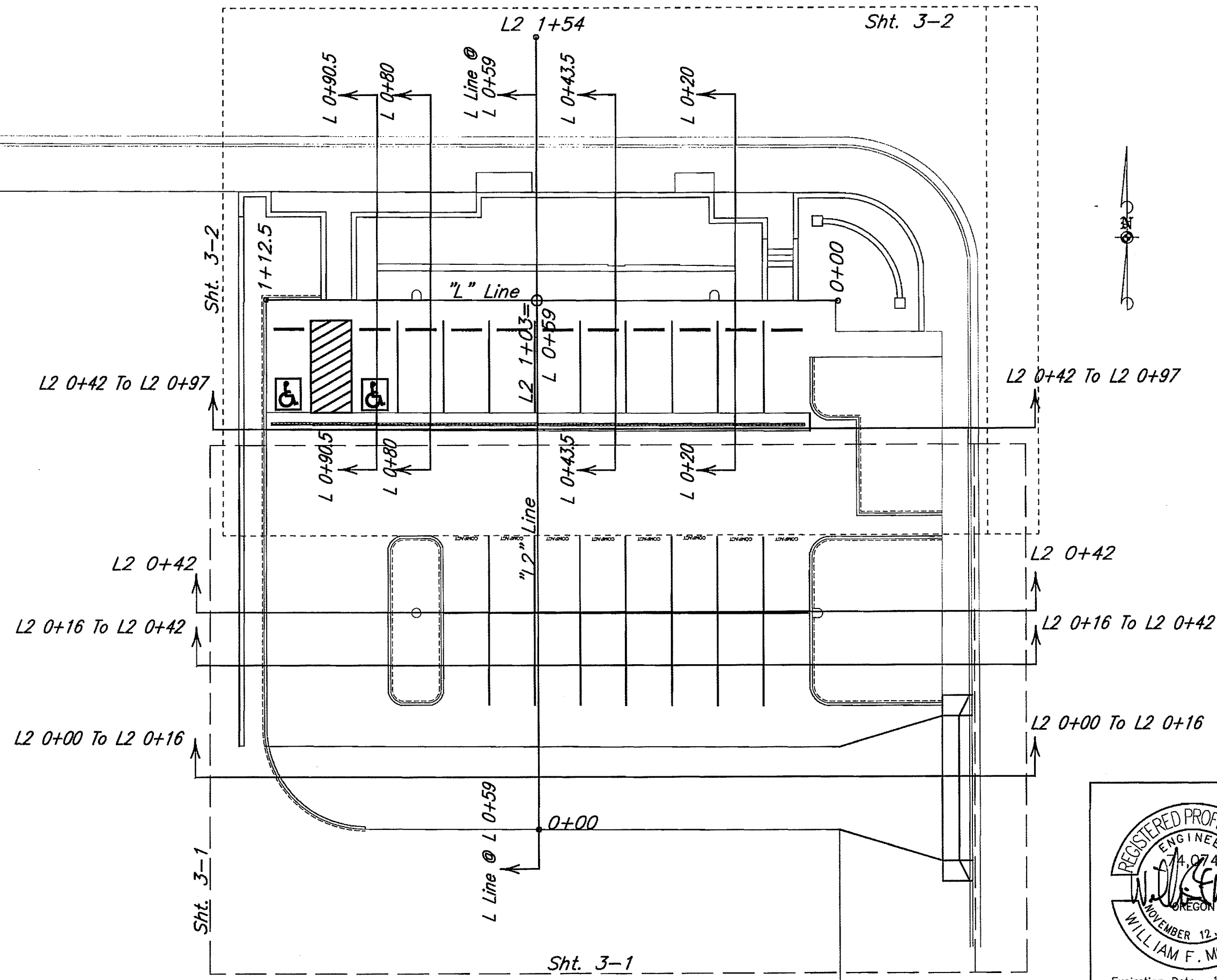
1" = 30'-0"



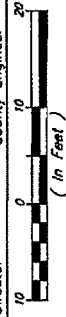
LANE TRANSIT DISTRICT
VENETA TRANSIT CENTER

PROJECT #:	0914	HC
DATE:	5.12.10	
DRAWN:	KGT	CHECK:

SHEET & SECTION LAYOUT



LANE COUNTY
DEPARTMENT OF PUBLIC WORKS
 ENGINEERING AND CONSTRUCTION SERVICES DIVISION
 MASSHA A. MILLER
 Public Works Director
 WILLIAM F. MORGAN, P.E.
 County Engineer



Appr'd	Revision	Date

VENETA TRANSIT CENTER
 VENETA, OREGON

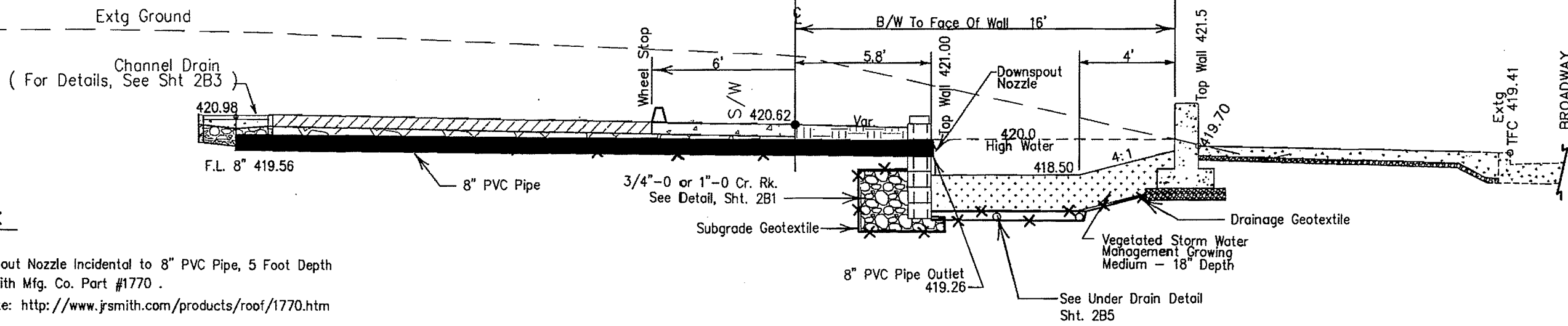
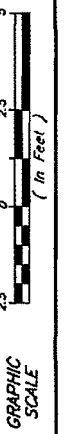
DATE	PROJECT NO.	ROAD NO.
June 2010	0877-5	None



Expiration Date 12/31/10



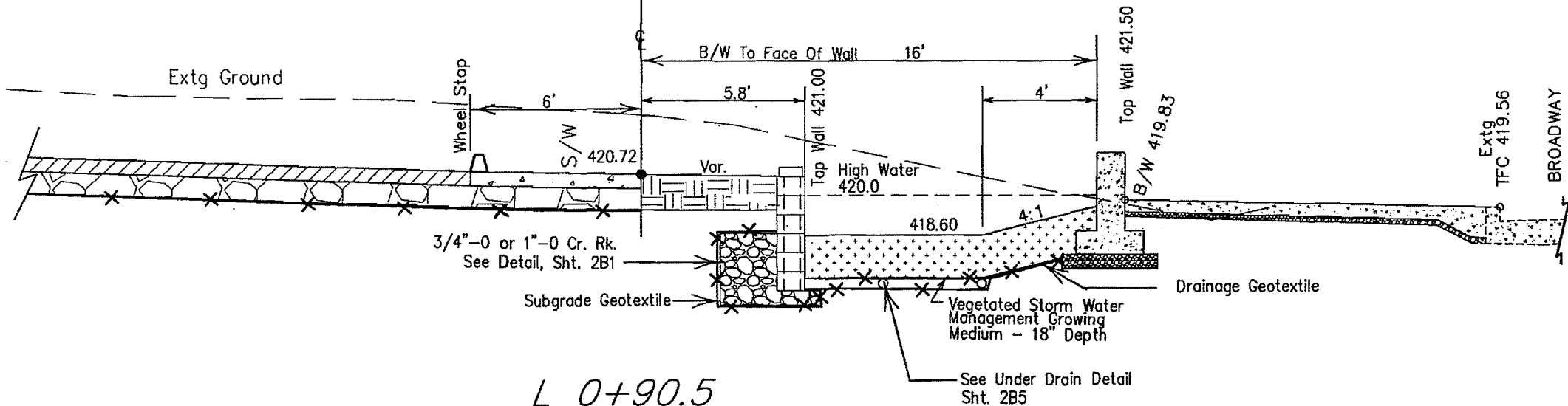
LANE COUNTY
 DEPARTMENT OF PUBLIC WORKS
 ENGINEERING DIVISION
 MARSHA A. MILLER
 Public Works Director
 WILLIAM F. MORGAN, P.E.
 County Engineer



NOTE:

8" Downspout Nozzle Incidental to 8" PVC Pipe, 5 Foot Depth
 Jay R. Smith Mfg. Co. Part #1770 .
 See Website: <http://www.jrsmith.com/products/roof/1770.htm>

L 0+80
 No Scale - For Wall Details Not Shown,
 See Shts. 2B1, 2B2, & W8 Thru W9



L 0+90.5
 End Wall 5

No Scale - For Wall Details Not Shown,
 See Shts. 2B1, 2B2, & W8 Thru W9



Expiration Date 12/31/10

App'd	Revision	Date

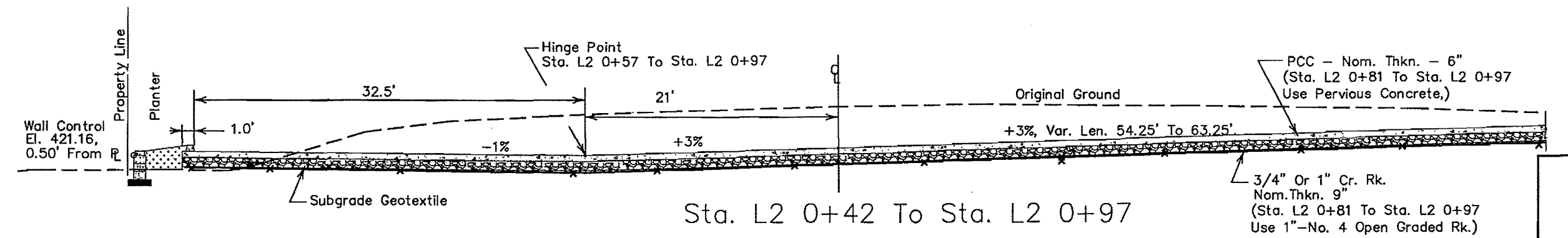
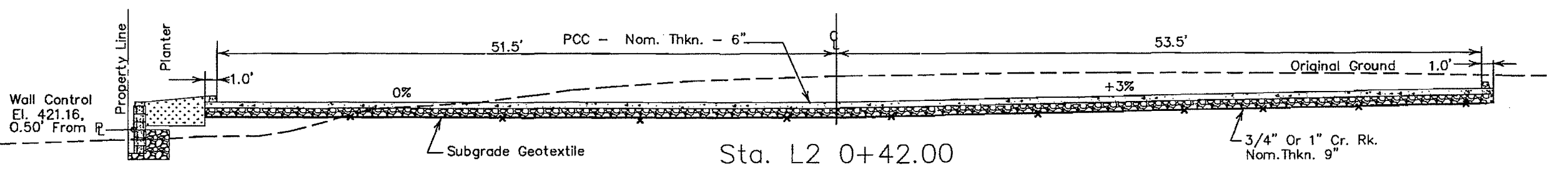
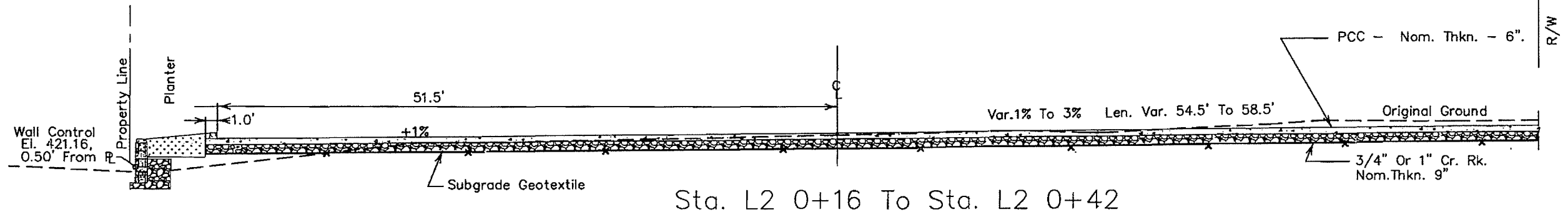
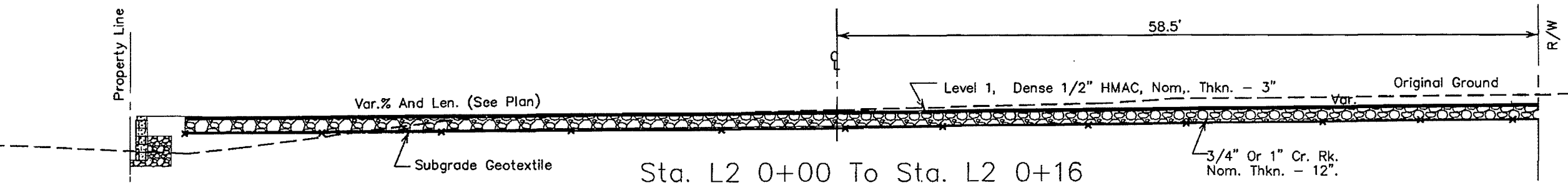
VENETA TRANSIT CENTER VENETA, OREGON	ROAD NO. None
DATE June 2010	PROJECT NO. 0877-5

SHEET NO. 2A3

Filename: F:\Projects\10077-5\VENETA\Plans\Section E-H.dwg - May 13, 2010

TYPICAL SECTIONS

L2 LINE - South-North



For Wall Details, See Sht 2B1, W6, & W7



LANE COUNTY
 DEPARTMENT OF PUBLIC WORKS
 ENGINEERING DIVISION
 WILLIAM F. MORGAN, P.E.
 County Engineer
 MARSHA A. MILLER
 Public Works Director

Appr'd	Reviser	Date

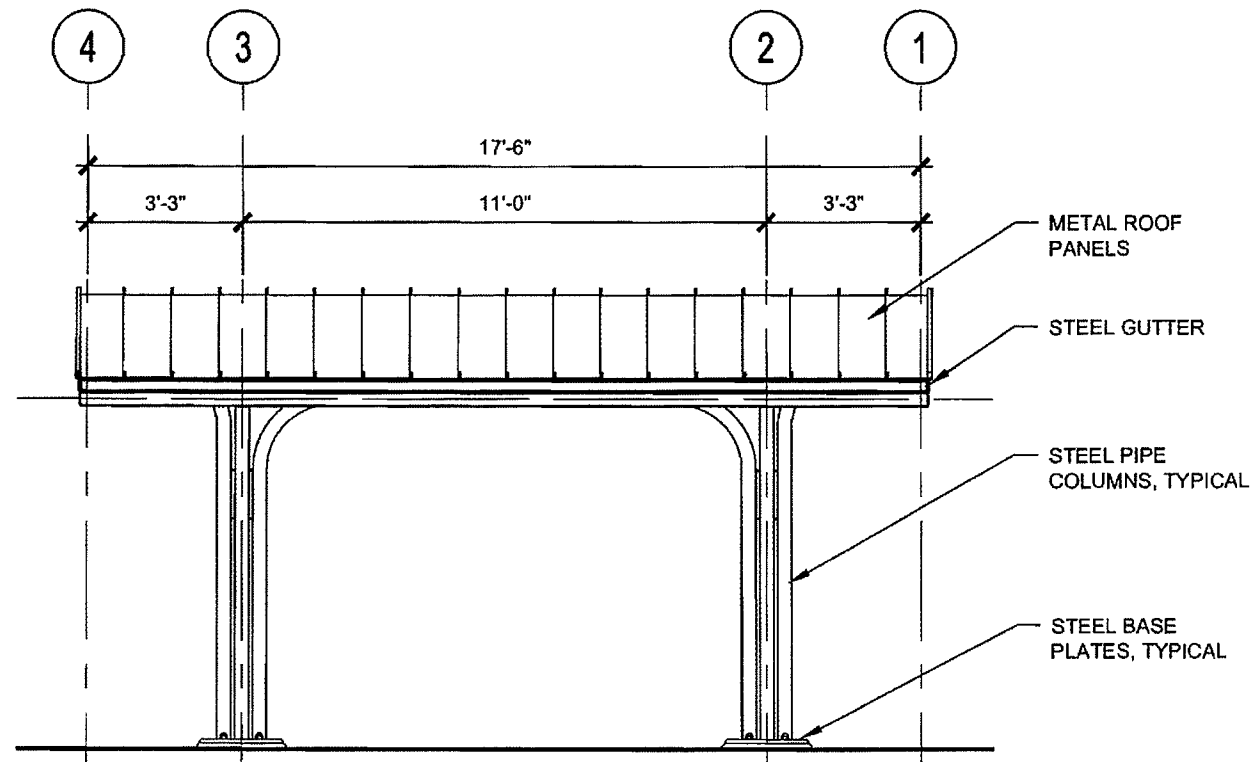
VENETA TRANSIT CENTER
 VENETA, OREGON

PROJECT NO. 0877-5
 ROAD NO. None
 DATE June 2010

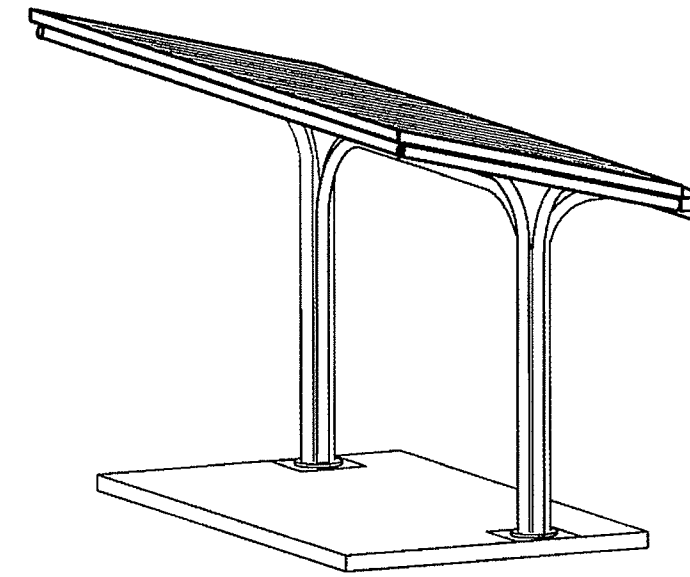


SHEET NO. 2A4

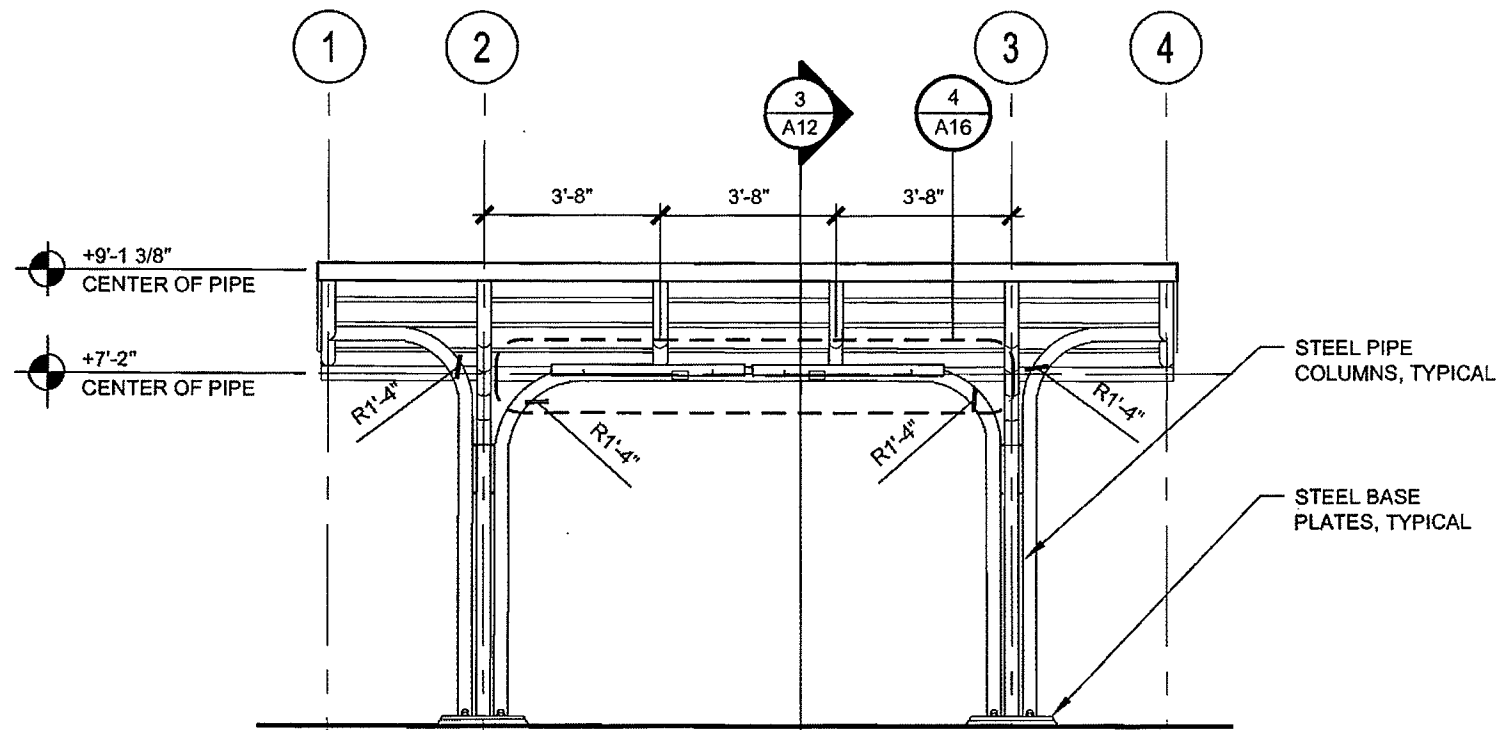
Expiration Date 12/31/10



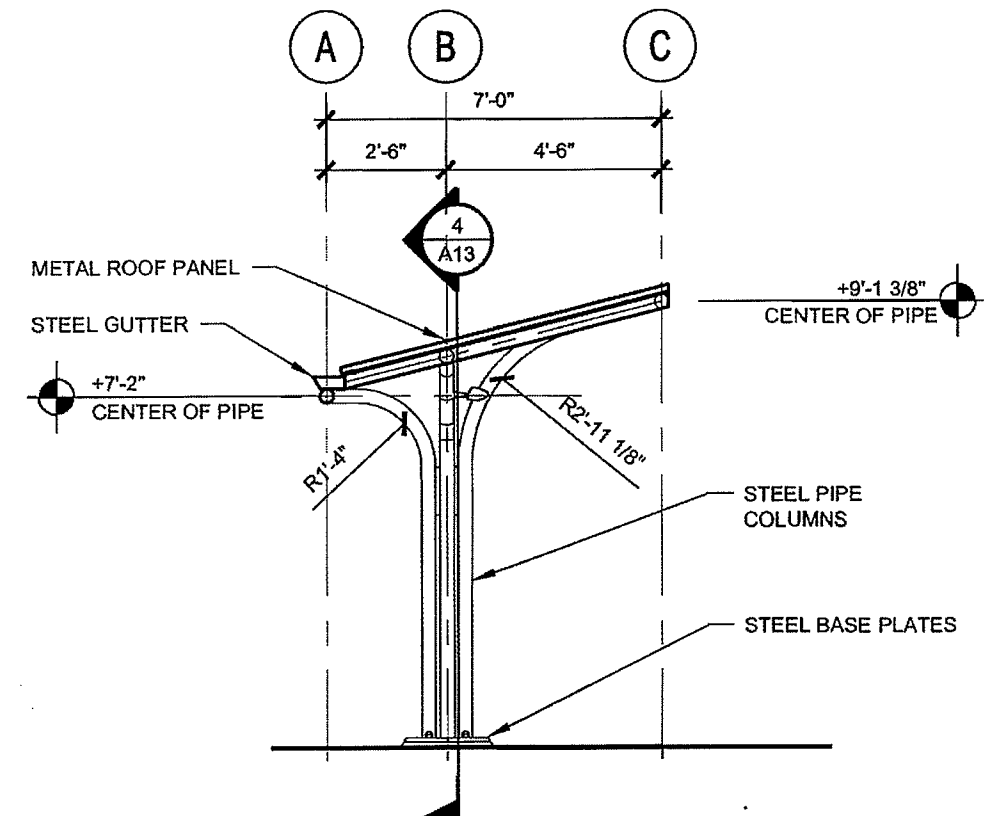
2 ELEVATION - LOWER EAVE
1/4" = 1'-0"



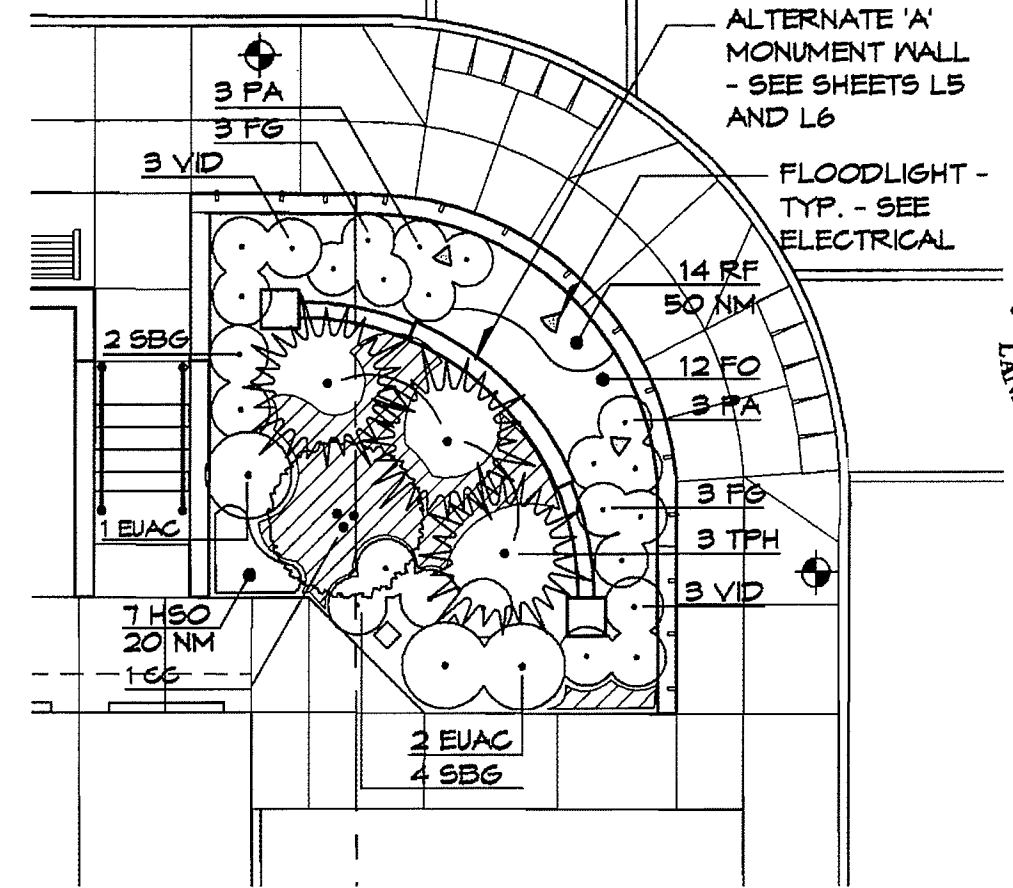
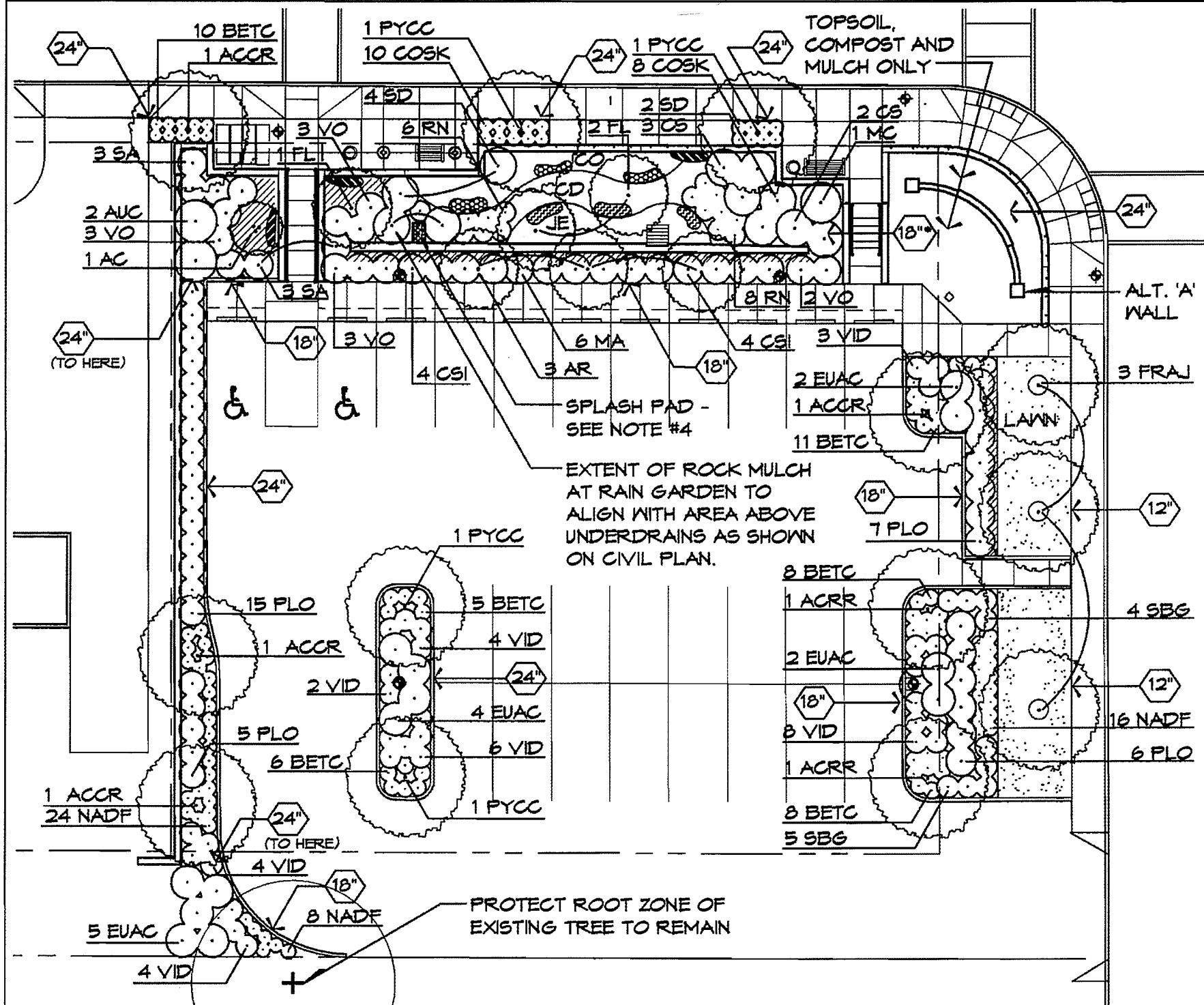
1 AXONOMETRIC
NTS



4 ELEVATION - UPPER EAVE
1/4" = 1'-0"



3 ELEVATION - SIDE
1/4" = 1'-0"



ALTERNATE 'A' PLANTING PLAN

SCALE: 1"=10'-0"

NOTES:

1. SEE SHEET L2 FOR PLANT SCHEDULE.
2. SEE SHEETS L3 AND L4 FOR IRRIGATION.
3. SEE SHEETS L5 AND L6 FOR ALTERNATE 'A' WALL DETAILS.
4. SPLASH PAD - RIVER ROCK TO BE APPROVED BY ARCHITECT - 2' X 3' X 12" DEPTH

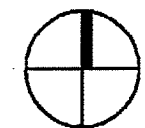
TOPSOIL DEPTH SCHEDULE

PARKING ISLANDS, STREET TREE PLANTERS AND MONUMENT
PLANTER - 24" TOPSOIL
PERIMETER PLANT BEDS - 18" TOPSOIL UNLESS OTHERWISE
NOTED
SOD LAWN - 12" TOPSOIL
*RAIN GARDEN - 18" SPECIFIED GROWING MEDIUM

PLANTING PLAN - BASE BID



SCALE: 1"=20'-0"



NORTH

PLANTING LEGEND

	PROPOSED TREES		SOD LAWN		AU - KINNIKINNICK
	EXISTING DECIDUOUS TREE TO REMAIN		SHRUBS		DENSE SEDGE (CAREX DENSA)
	TOPSOIL (OR GROWING MEDIUM) DEPTH- SEE ADJACENT SCHEDULE		LR - LUPINE (LUPINUS RVULARIS)		SLOUGH SEDGE (CAREX OBNUPTA)
			CQ - STREAMBANK CAMAS (CAMAS QUAMASH)		SOFT RUSH (JUNCUS EFFUSUS)
			IT - PACIFIC IRIS (IRIS TENAX)		

BASE BID PLANT SCHEDULE

KEY	QTY.	BOTANICAL NAME	COMMON NAME	MIN. SIZE	COMMENTS
-----	------	----------------	-------------	-----------	----------

TREES

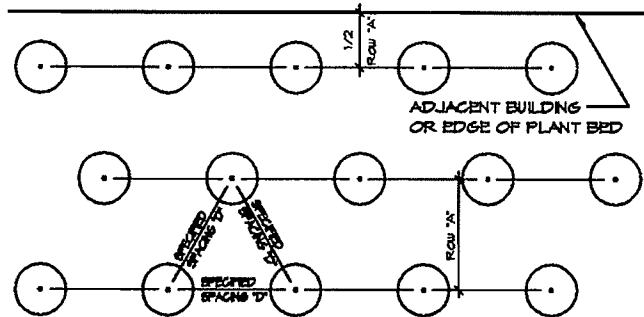
AC	1	Acer circinatum	Vine Maple	6' ht.	multi-stem, B&B
ACRR	6	Acer rubrum 'Red Sunset'	Red Sunset Maple	2" cal.	Matching, limbed up to approx. 6 ft.
AR	3	Alnus rubra	Red Alder	2" cal.	Matching.
FL	3	Fraxinus latifolia	Oregon Ash	1.75" cal.	Matching, full, B&B
FRAJ	3	Fraxinus americana 'Junginger'	Autumn Purple Ash	2" cal.	Matching, limbed up to approx. 6 ft.
PYCC	4	Pyrus calleryana 'Chanticleer'	Chanticleer Pear	2" cal.	single stem, B&B, matching, full

SHRUBS

AUC	2	Arbutus unedo 'Compacta'	Strawberry Tree	5 gal.	matching, full
BETC	48	Berberis thunbergii 'Crimson Pygmy'	Dwarf Japanese Barberry	3 gal.	matching, full
COSK	18	Cornus sericea 'Kelsey'	Dwarf Redtwig Dogwood	3 gal.	matching, full
CS	5	Cornus sericea	Red-Osier Dogwood	3' ht.	matching, full
CSL	3	Cornus sericea 'Isanti'	Isanti Red-Osier Dogwood	5 gal.	matching, full
EUAC	13	Euonymus alata 'Compacta'	Compact Burning Bush	5 gal.	matching, full
MA	6	Mahonia aquifolium	Oregon Grape	3 gal.	matching, full
MC	1	Murica californica	Pacific Wax Myrtle	3.5' ht.	matching, full
NADF	48	Nandina domestica 'Firepower'	Firepower Nandina	3 gal.	matching, full
PLO	33	Prunus laurocerasus 'Otto Luyken'	Otto Luyken English Laurel	5 gal.	matching, full
RN	14	Rosa nutkana	Nootka Rose	3 gal.	matching, full
SA	6	Symphoricarpos albus	Snowberry	3 gal.	matching, full
SBS	4	Spiraea bumalda 'Goldflame'	Gold Flame Spiraea	3 gal.	matching, full
SD	6	Spiraea douglasii	Western spiraea	3' ht.	matching, full
VID	31	Viburnum davidii	David Viburnum	3 gal.	matching, full
VO	11	Vaccinium ovatum	Evergreen Huckleberry	3 gal.	matching, full

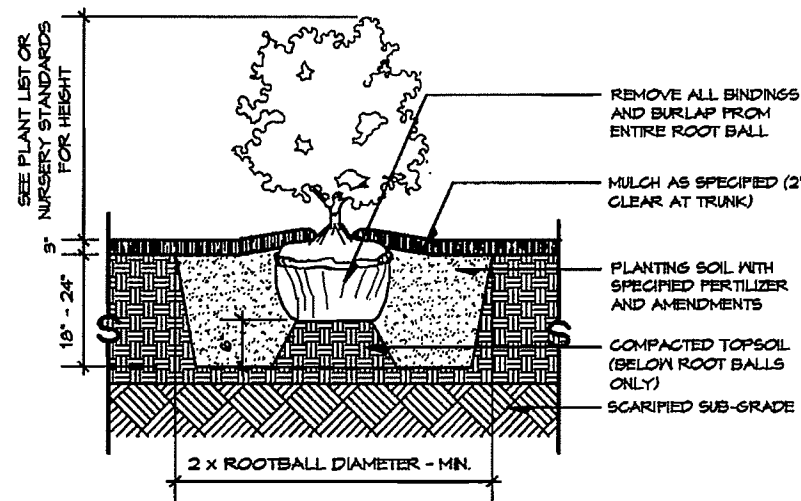
GROUNDCOVERS, GRASSES AND PERENNIALS

AU	44	Arctostaphylos uva-ursi	Kinnikinnick	1 gal.	matching, full, 24" o.c.
CD	45	Carex densa	Dense Sedge	1 gal.	matching, full
CO	45	Carex obovata	Slough Sedge	1 gal.	matching, full
CQ	24	Camassia quamash	Camas	bulb	large
IT	18	Iris tenax	Pacific Iris	bulb	large
JE	25	Juncus effusus	Soft Rush	1 gal.	matching, full
LR	21	Lupinus rivularis	Streambank Lupine	6" pots	large, full



SPACING 'D'	ROW 'A'	SPACING 'D'	ROW 'A'
3" O.C.	2.6'	18" O.C.	15.6'
6" O.C.	5.2'	24" O.C.	20.8'
9" O.C.	7.8'	30" O.C.	26.0'
12" O.C.	10.4'	36" O.C.	30.0'
15" O.C.	13.0'	48" O.C.	41.5'

1 GROUNDCOVER SPACING DIAGRAM
L2 PLAN NTS



2 TYPICAL SHRUB PLANTING
L2 SECTION SCALE: 3/8" = 1'-0"

ALTERNATE 'A' PLANT SCHEDULE

KEY	QTY.	BOTANICAL NAME	COMMON NAME	MIN. SIZE	COMMENTS
-----	------	----------------	-------------	-----------	----------

TREES

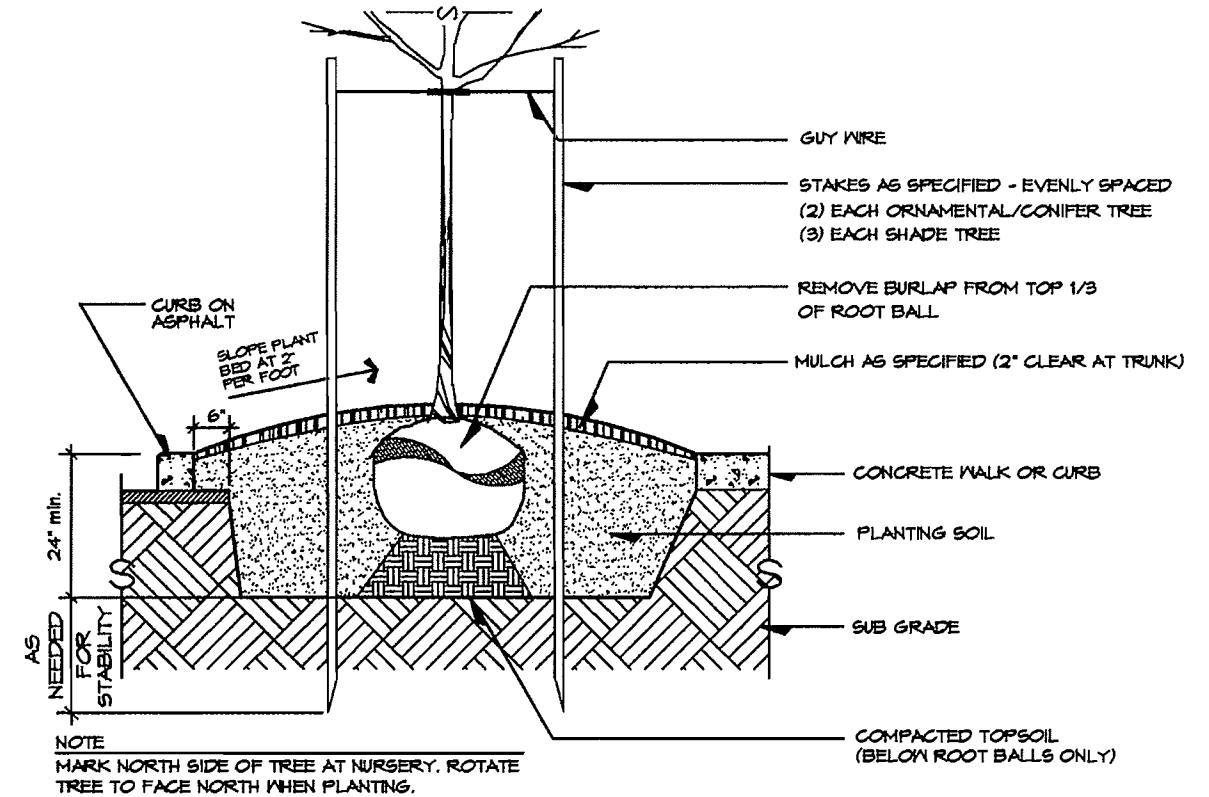
CC	1	Cercis canadensis 'Forest Pansy'	Forest Pansy Red bud	8' ht.	multi-stem, B&B, matching, full
TPH	3	Thuja plicata 'Hogan'	Hogan Red Cedar	(2) 8' ht. (1) 12' ht.	Matching, full, B&B

SHRUBS

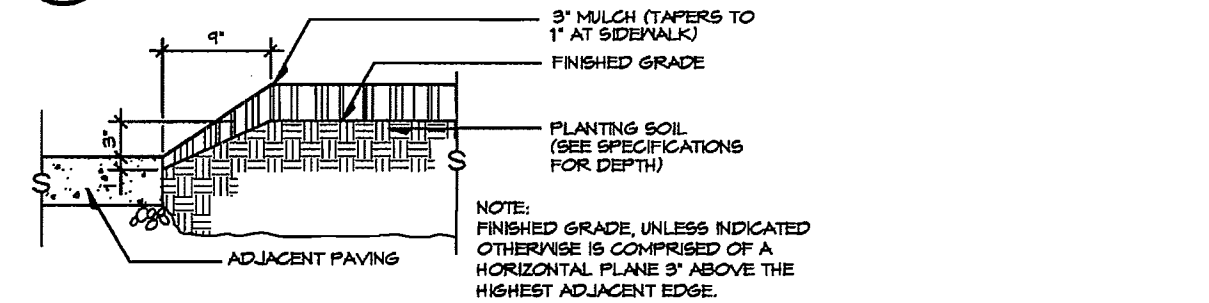
EUAC	3	Euonymus alata 'Compacta'	Compact Burning Bush	5 gal.	matching, full
FG	6	Fothergilla gardenii	Dwarf Fothergilla	3 gal.	matching, full
SBS	6	Spiraea bumalda 'Goldflame'	Gold Flame Spiraea	3 gal.	matching, full
VID	6	Viburnum davidii	David Viburnum	3 gal.	matching, full

GROUNDCOVERS, GRASSES, PERENNIALS AND BULBS

AU	22	Arctostaphylos uva-ursi	Kinnikinnick	1 gal.	matching, full, 24" o.c.
FO	12	Festuca glauca ovina	Blue Fescue	1 gal.	matching, full, 18" o.c.
HSD	7	Hemerocallis 'Stella D' Oro'	Stella D' Oro Daylily	1 gal.	matching, full
NM	70	Narcissus 'Mt. Hood'	Mount Hood Daffodil	bulb	large
PA	6	Pennisetum alopecuroides	Fountain Grass	1 gal.	matching, full
RF	14	Rudbeckia fulgida	Black-Eyed Susan	1 gal.	15" o.c.

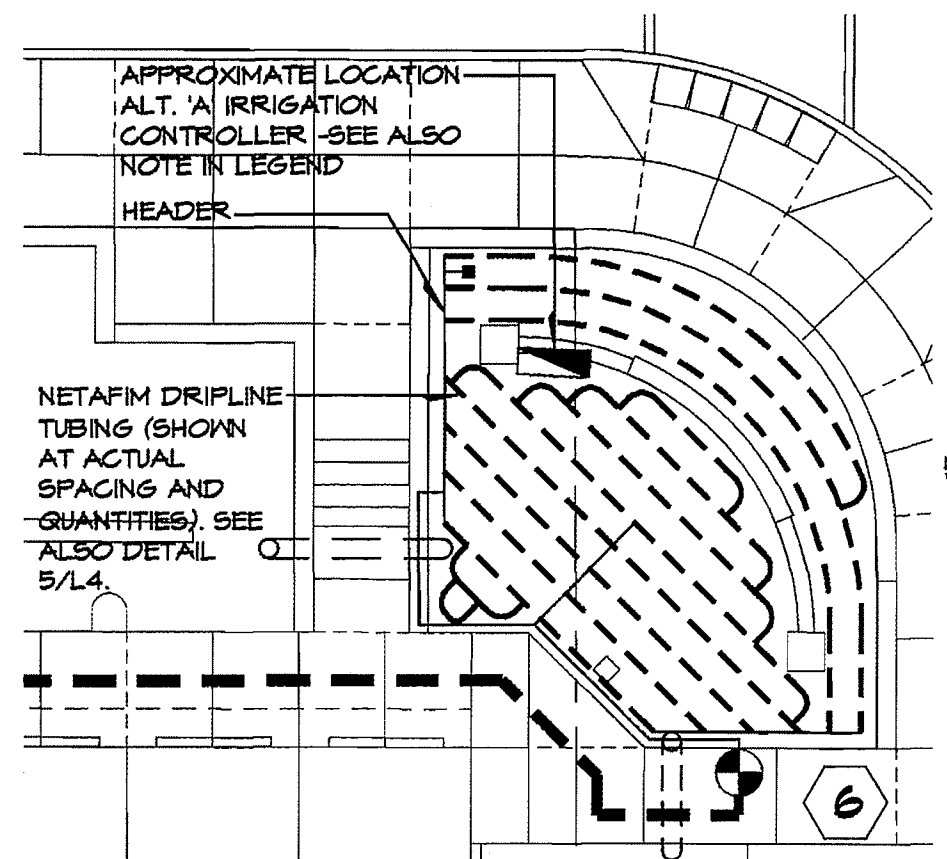
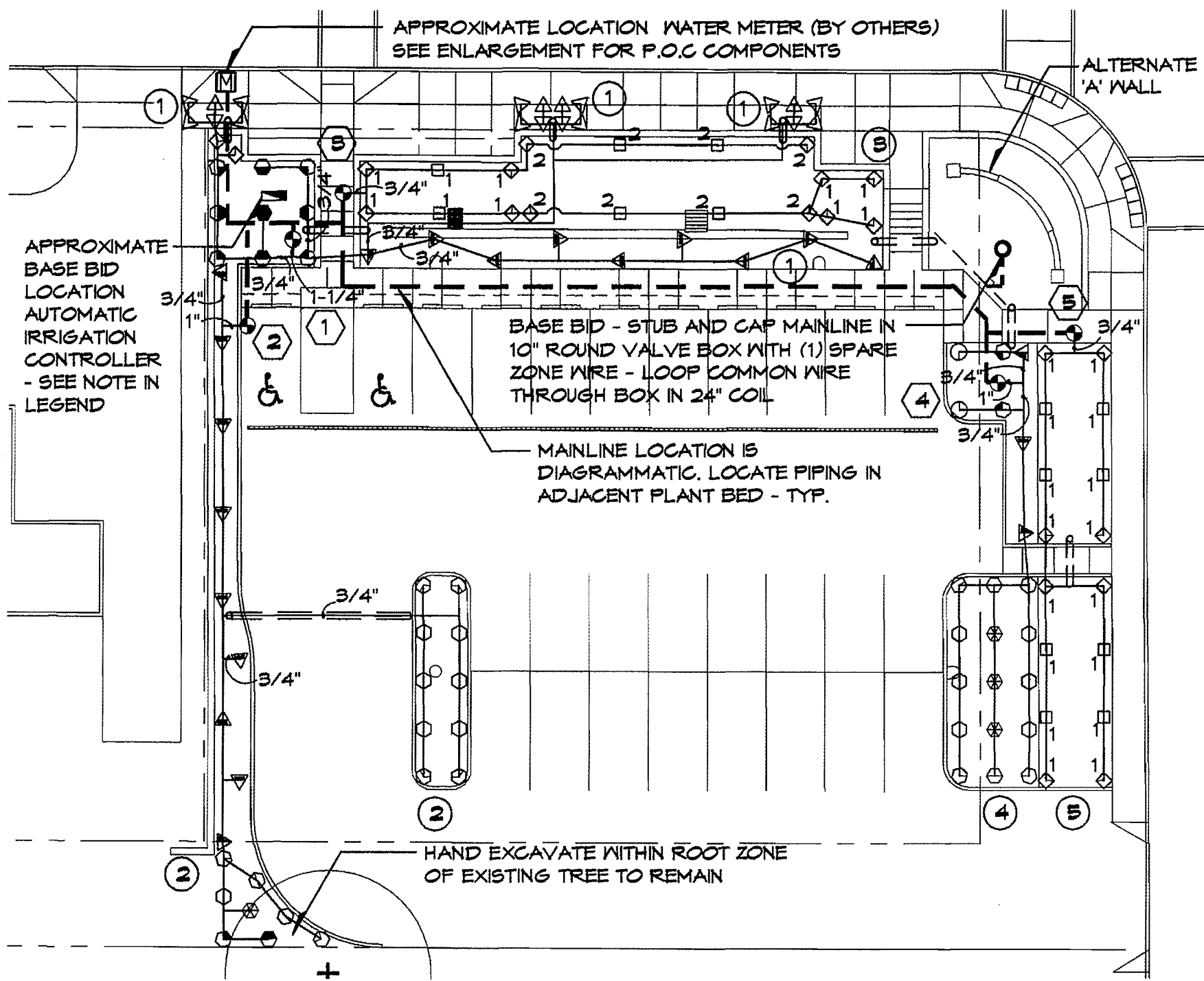


3 TREE PLANTING AT PARKING AREAS
L2 SECTION SCALE: 1/2" = 1'-0"

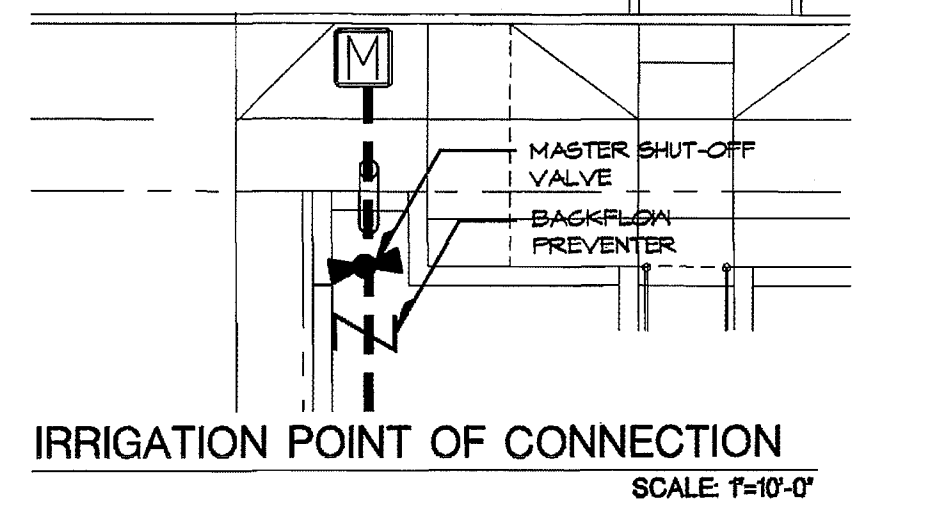


4 PLANT BED EDGE AT PAVEMENT
L2 SECTION SCALE: 3/4" = 1'-0"

PLANT SCHEDULE AND DETAILS



ALTERNATE 'A' IRRIGATION (ZONE#6)
SCALE: 1"=10'-0"

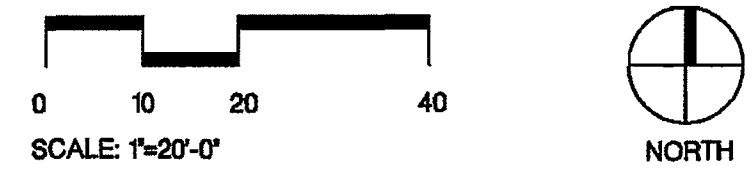


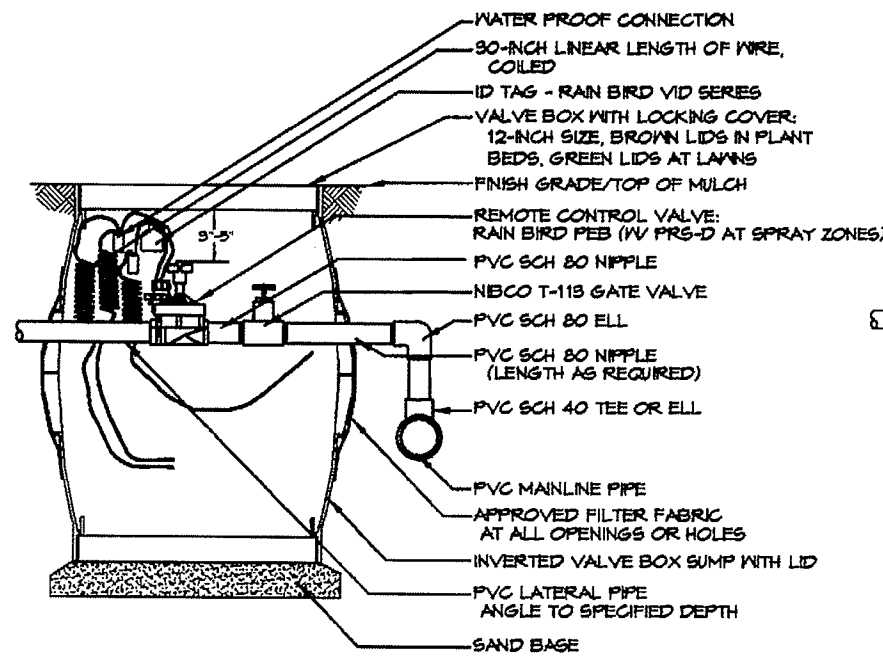
LEGEND

- | | | |
|---|--|--|
| WATER METER - BY OTHERS | BACK FLOW PREVENTER - 1" WILKINS 950 XLT | PLANT BED EDGE |
| MASTER SHUT-OFF VALVE - KENNEDY KSRW-7057 | LATERAL LINE AND SIZE | IRRIGATION SLEEVE - (1) 6" SLEEVE AT ALL LOCATIONS |
| AUTOMATIC CONTROLLER - RAIN BIRD ESPLXM-8 STATION: BASE BID - MOUNTED IN RAIN BIRD LXMM METAL CABINET ON RAIN BIRD LXMMPED METAL PEDESTAL: ALTERNATE 'A' - WALL MOUNTED | IRRIGATION MAINLINE - 2" THROUGHOUT | IRRIGATION VALVE NUMBER |
| AUTOMATIC CONTROL VALVE - RAIN BIRD PEB AT SPRAY ZONES AND HUNTER ICZ 101 AT DRIP ZONES | LANDSCAPE DRIPLINE TUBING NETAFIM TLCV6-1210 | IRRIGATION ZONE NUMBER |
| | MANUAL LINE FLUSH VALVE - NETAFIM TECHLINE CV #TL50V | |

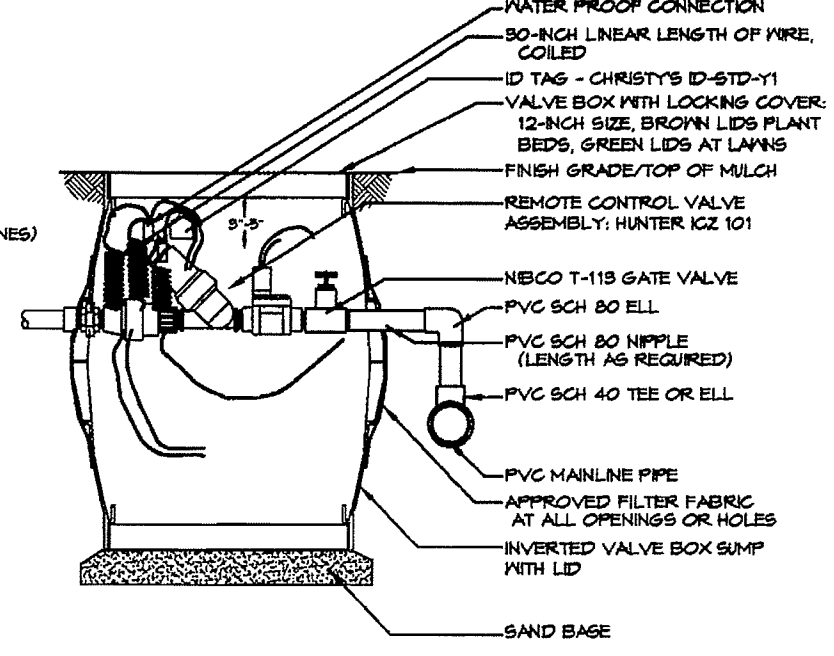
NOTE:
SEE SHEET L4 FOR VALVE AND HEAD SCHEDULES, IRRIGATION DETAILS AND NOTES.

**IRRIGATION PLAN
BASE BID**

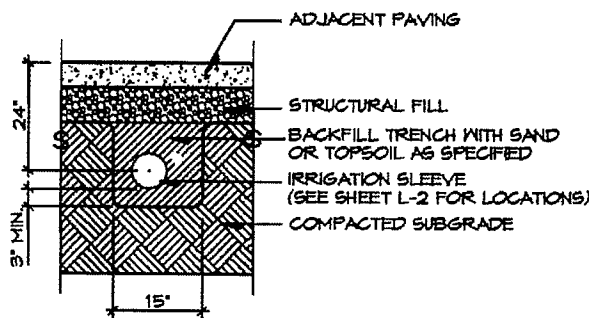




1 SECTION SCALE: 3/4" = 1'-0"

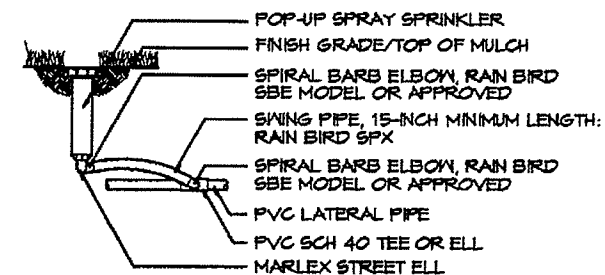


2 SECTION SCALE: 3/4" = 1'-0"

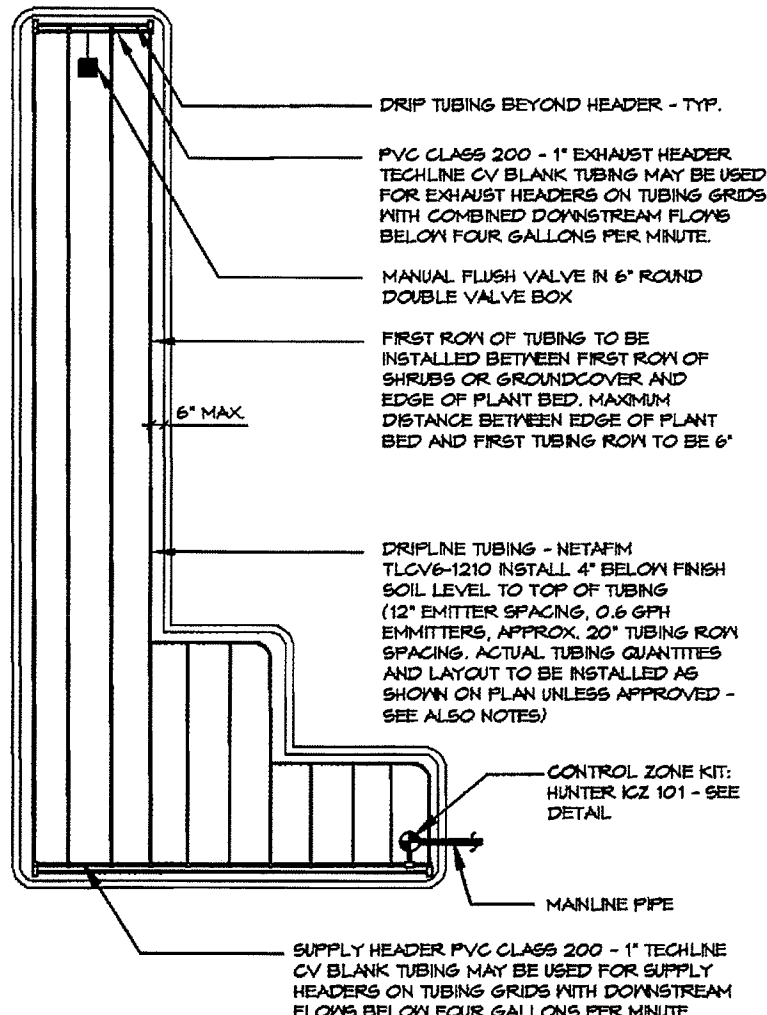


NOTE: - EXTEND SLEEVES 4" BEYOND PAVEMENT EDGES.
 - INSTALL 1X2 RED-TOP, WOOD, LOCATION STAKES @ FACE OF WALK OR CURB @ BOTH ENDS OF ALL IRRIGATION SLEEVES. HOLD DOWN 1" BELOW TOP OF CURB OR WALK.
 - INSTALL (1) 6" SCHEDULE 40 P.V.C. SLEEVE AT EACH LOCATION.

3 SECTION SCALE: 3/8" = 1'-0"



4 SECTION SCALE: 1" = 1'-0"



5 PLAN SCALE: 3/8" = 1'-0"

HEAD SCHEDULE

SYMBOL	MAKE	MODEL	NOZZLE	PSI	GPM
⊕	RAIN BIRD	1804/6	12F	25	2.40
⊖	RAIN BIRD	1804/6	12TQ	25	1.80
⊙	RAIN BIRD	1804/6	12TT	25	1.61
⊗	RAIN BIRD	1804/6	12H	25	1.20
⊘	RAIN BIRD	1804/6	12T	25	.80
⊚	RAIN BIRD	1804/6	12Q	25	.60
●	RAIN BIRD	1804/6	10F	25	1.44
⊖	RAIN BIRD	1804/6	10H	25	.72
⊙	RAIN BIRD	1804/6	10T	25	.48
⊗	RAIN BIRD	1804/6	10Q	25	.36
⊘	RAIN BIRD	1804/6	8F	25	.82
⊚	RAIN BIRD	1804/6	8H	25	.41
⊙	RAIN BIRD	1804/6	8T	25	.27
⊗	RAIN BIRD	1804/6	8Q	25	.21
▽	RAIN BIRD	1804/6	15LCS/RCS	25	.45
▽	RAIN BIRD	1804/6	1555T	25	1.11
▽	RAIN BIRD	1804/6	5H	25	.18
△	RAIN BIRD	1804/6	5Q	25	.09
1 ⊕ B1	WALLA WALLA	1804	MP 1000	40	VARIES
2 ⊕ B2	WALLA WALLA	1804	MP 2000	40	VARIES

MP ROTATORS TO BE INSTALLED ON RAIN BIRD BODIES

BASE BID VALVE SCHEDULE

ZONE	AREA	HEAD	PSI	GPM	SIZE
1.	UPLAND SHRUB	1806	25	17.36	1"
2.	WEST PL / PARKING SHRUB	1806	25	16.92	1"
3.	RAIN GARDEN SHRUB	MP/1806	40	6.82	1"
4.	EAST PARKING / SHRUB	1806	25	11.89	1"
5.	LAWN	MP/1804	40	4.48	1"
6.-8.	SPARE				

ALL SPRAY ZONE VALVES TO BE EQUIPPED WITH PRS-D PRESSURE REGULATOR

ALTERNATE 'A' VALVE SCHEDULE

ZONE	AREA	HEAD	PSI	GPM	SIZE
6.	MONUMENT SHRUB	DRIP	35	-	1"

IRRIGATION SYSTEM SPECIFICATIONS

- IRRIGATION PIPING LAYOUT IS DIAGRAMMATIC FOR GRAPHIC CLARITY, ACTUAL LOCATIONS TO BE DETERMINED IN FIELD. HEADS TO BE SPACED IN EVEN INCREMENTS OR AT PAVEMENT OR PLANT BED ENDS. CONTRACTOR TO CONTACT LANDSCAPE ARCHITECT PRIOR TO INSTALLATION IF INTENT IS UNCLEAR.
- PROVIDE ISOLATION GATE VALVE BEFORE EACH AUTOMATIC CONTROL VALVE. (SEE DETAIL) (NIBCO T-113 OR APPROVED)
- LOCATE ALL ADJACENT UTILITIES PRIOR TO WORK.
- PROVIDE MANUAL, BRONZE DRAIN VALVES AT MAIN LINE LOW POINTS.
- CONTRACTOR TO VERIFY SUFFICIENT WATER VOLUME AND PRESSURE AT SITE TO OPERATE SYSTEM AS DESIGNED.
- PROVIDE (2) SPARE CONTROL WIRES TO FURTHEST POINT ON MAINLINE.
- CONTRACTOR TO PROVIDE LAMINATED, REDUCTION OF IRRIGATION PLAN INSIDE CONTROLLER CABINET WHICH IDENTIFIES ZONES.

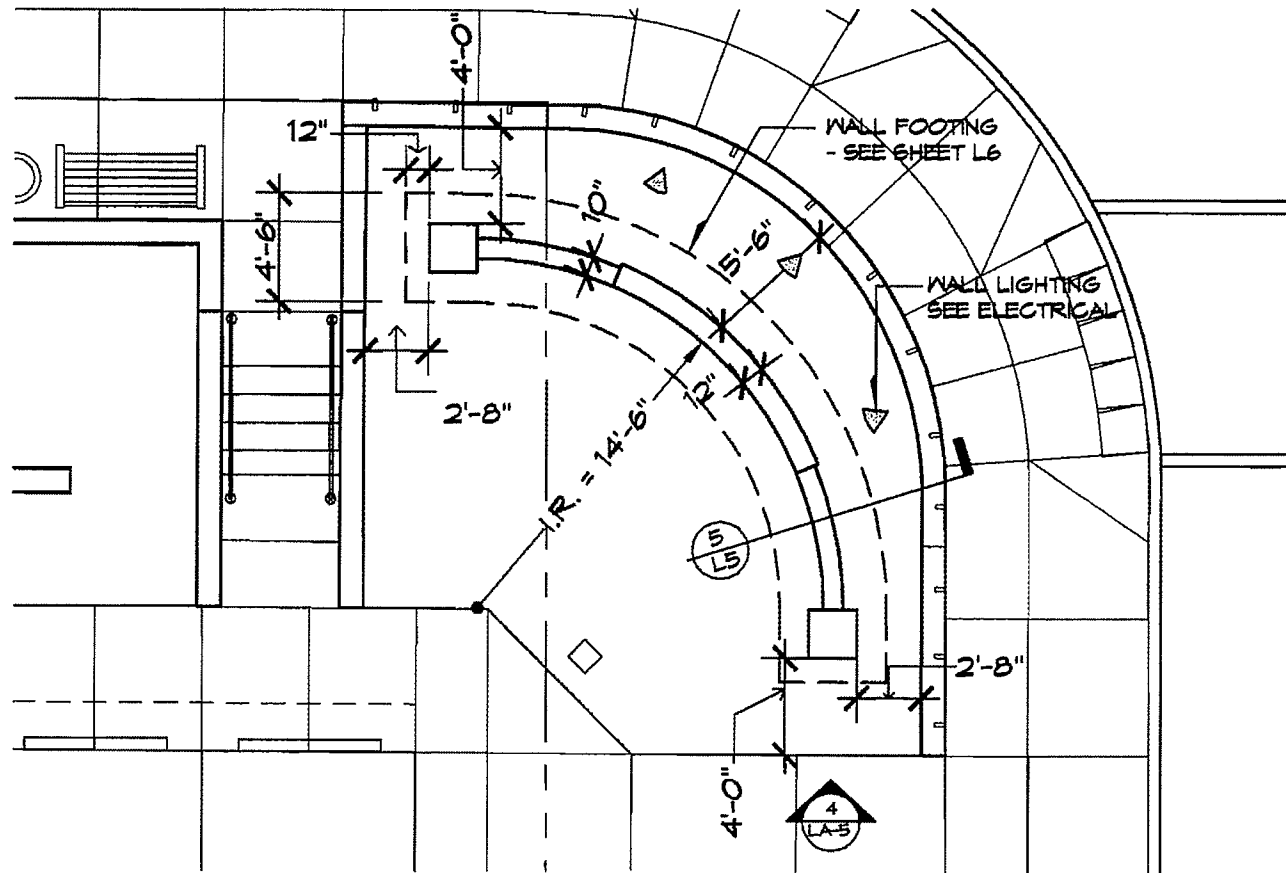
IRRIGATION SCHEDULES AND DETAILS



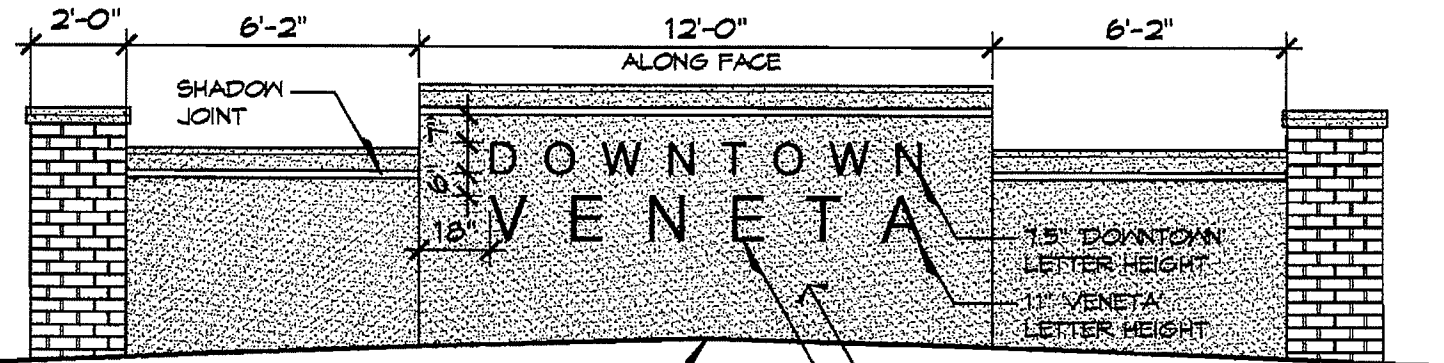
LANE TRANSIT DISTRICT
 VENETA TRANSIT CENTER

PROJECT #: 0914
 DATE: 5/2/10
 DRAWN: EP
 CHECK: DJD

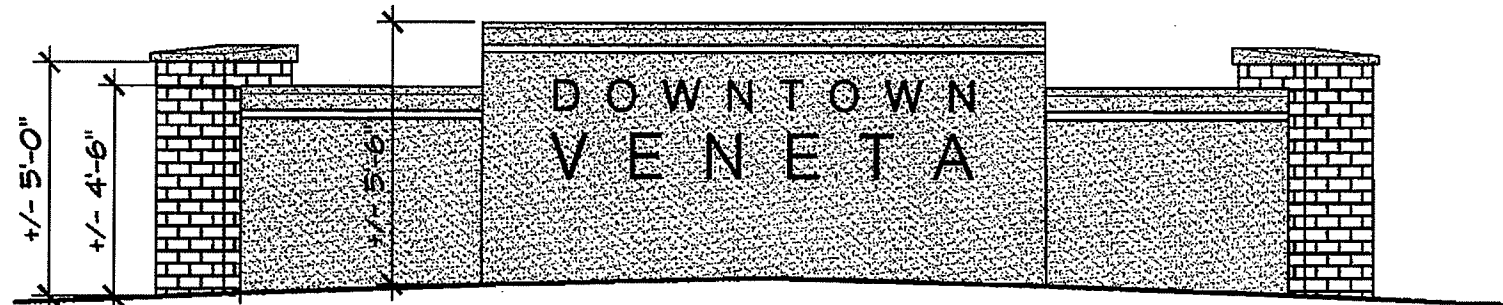
L4



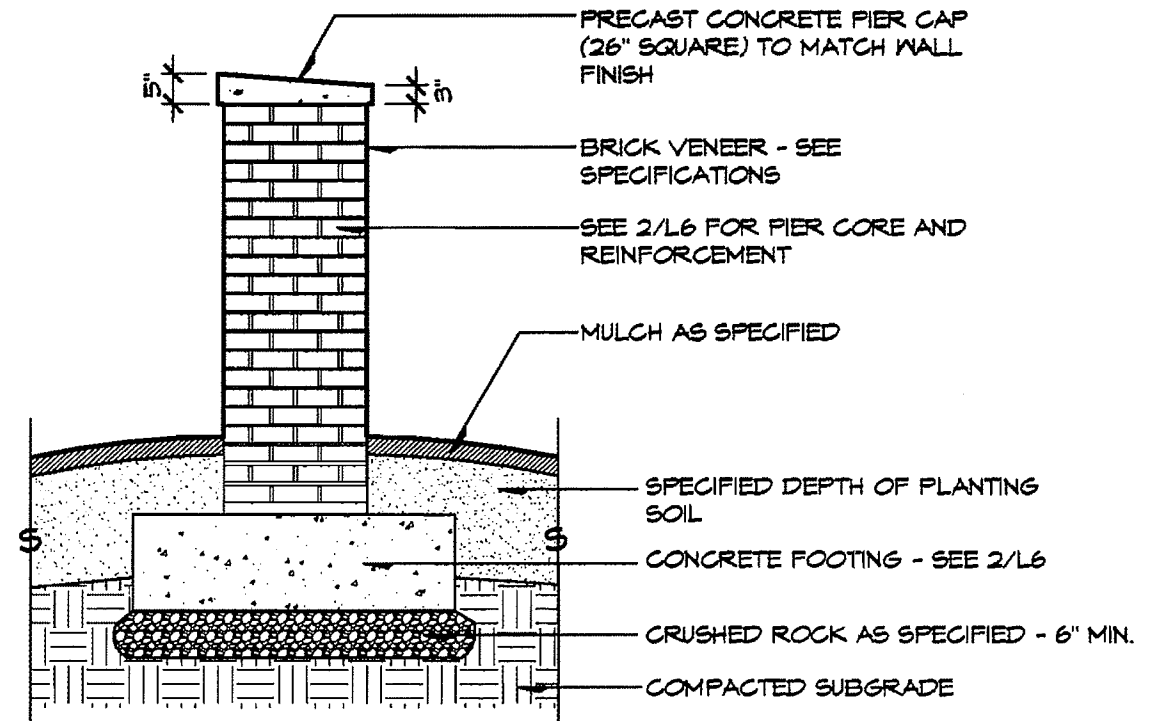
1 MONUMENT WALL LAYOUT PLAN
L5 SCALE: 1/8" = 1'-0"



2 ELEVATION - FULL WALL LENGTH
L5 SCALE: 1/4" = 1'-0"

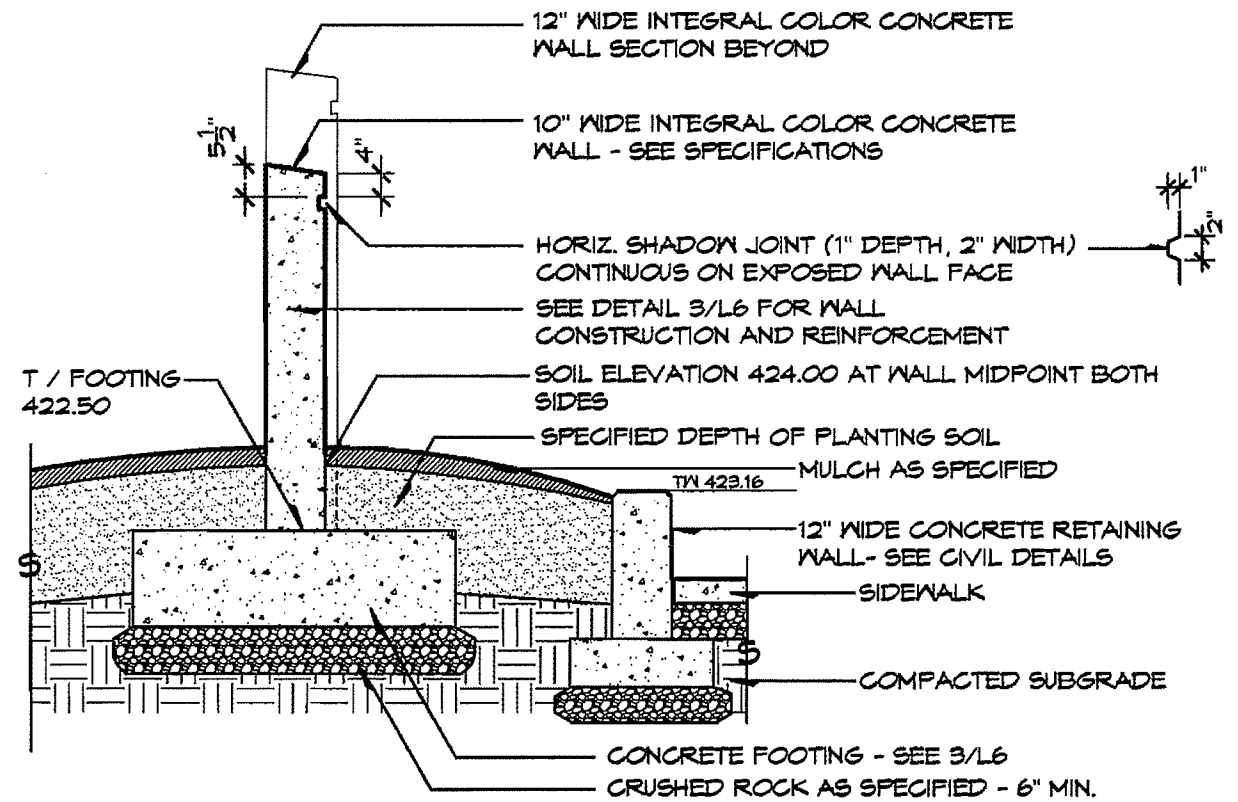


3 TRUE WALL ELEVATION
L5 SCALE: 1/4" = 1'-0"



NOTE: SEE SHEET L6 FOR STRUCTURAL COMPONENTS AND DETAILS - TYP.

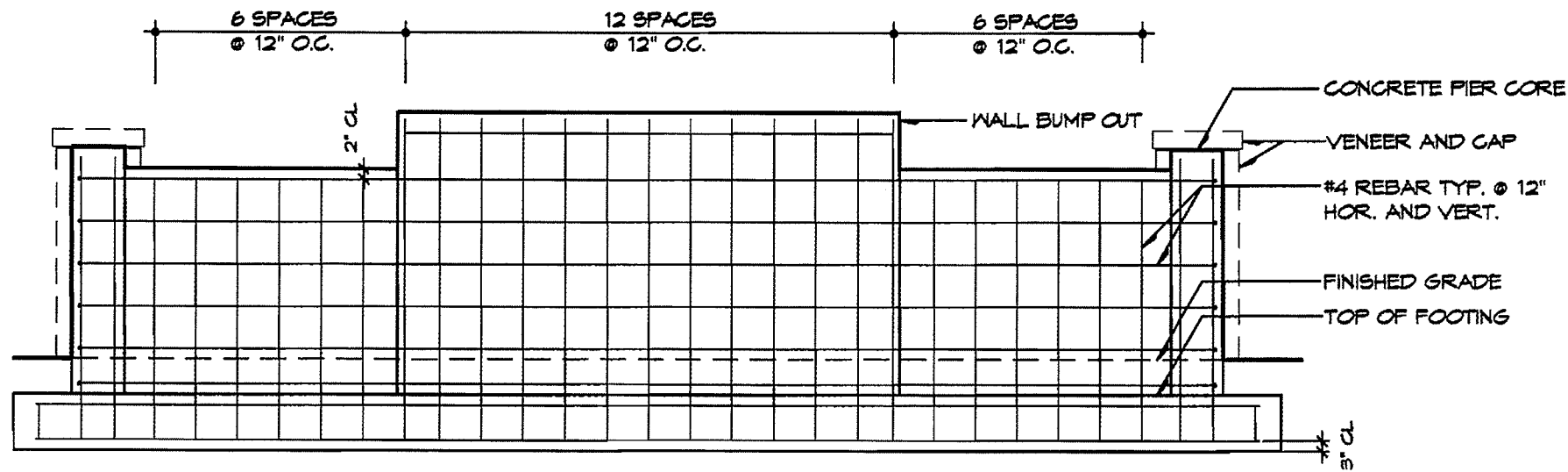
4 CONCRETE PIER W / BRICK VENEER
L5 SECTION / ELEVATION SCALE: 3/8" = 1'-0"



NOTE: SEE SHEET L6 FOR STRUCTURAL COMPONENTS AND DETAILS - TYP.

5 CONCRETE MONUMENT WALL
L5 SECTION / ELEVATION SCALE: 3/8" = 1'-0"

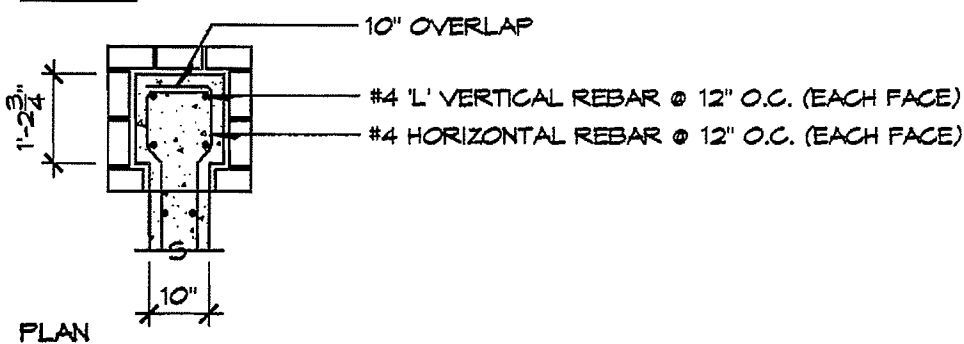
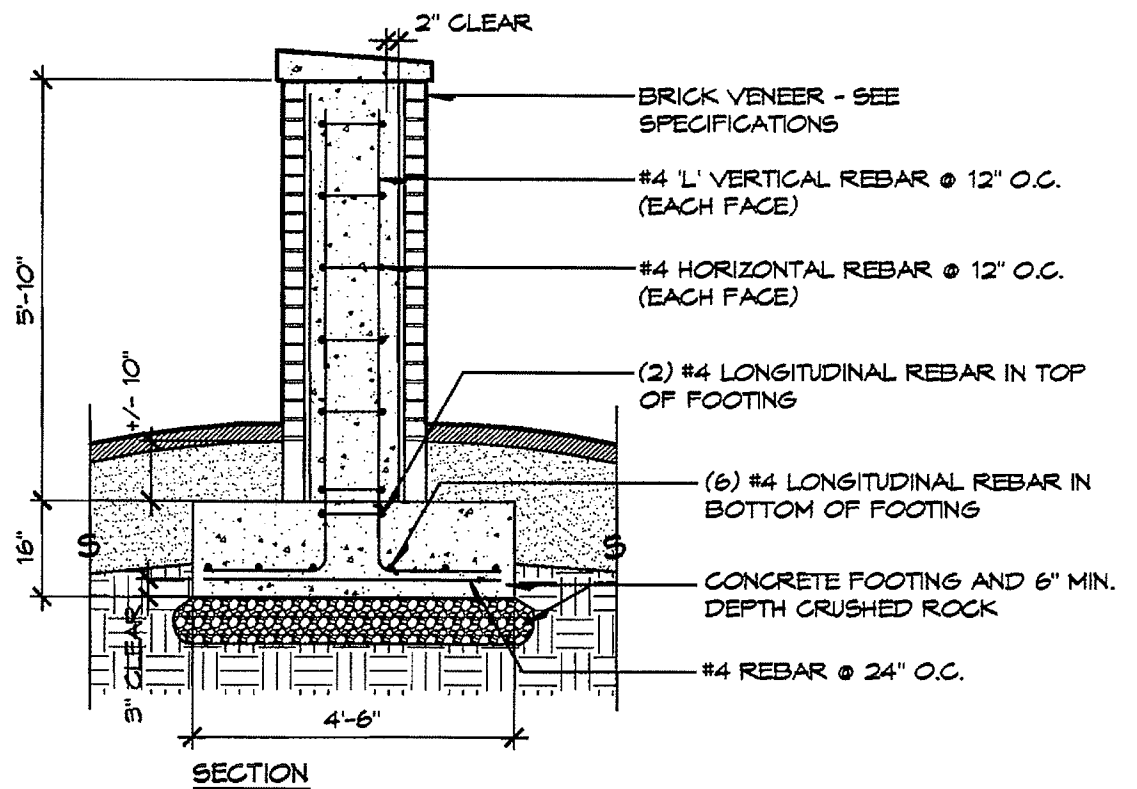
ALTERNATE 'A' - MONUMENT WALL



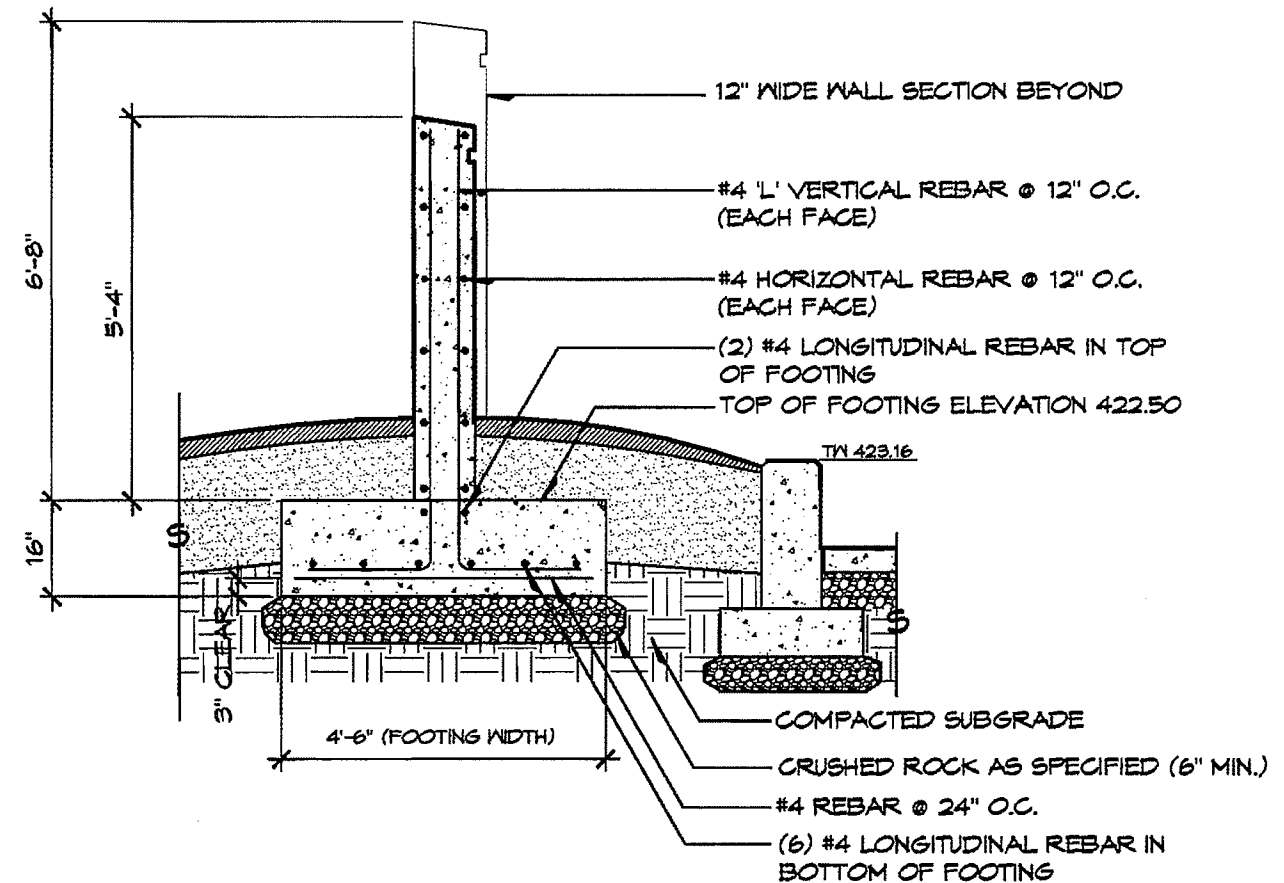
GENERAL NOTES:

1. SEE SPECIFICATIONS FOR CONCRETE WALL FINISH AND INTEGRAL COLOR.
2. SEE SPECIFICATIONS FOR WALL LETTERING AND SHOP DRAWING REQUIREMENTS.
3. SEE SPECIFICATIONS FOR BRICK VENEER AND MASONRY REQUIREMENTS.
4. SEE CIVIL DRAWINGS FOR RETAINING WALL AND SIDEWALK CONSTRUCTION.

1 STEEL REINFORCEMENT - FULL WALL LENGTH
L6 ELEVATION
SCALE: 1/4" = 1'-0"

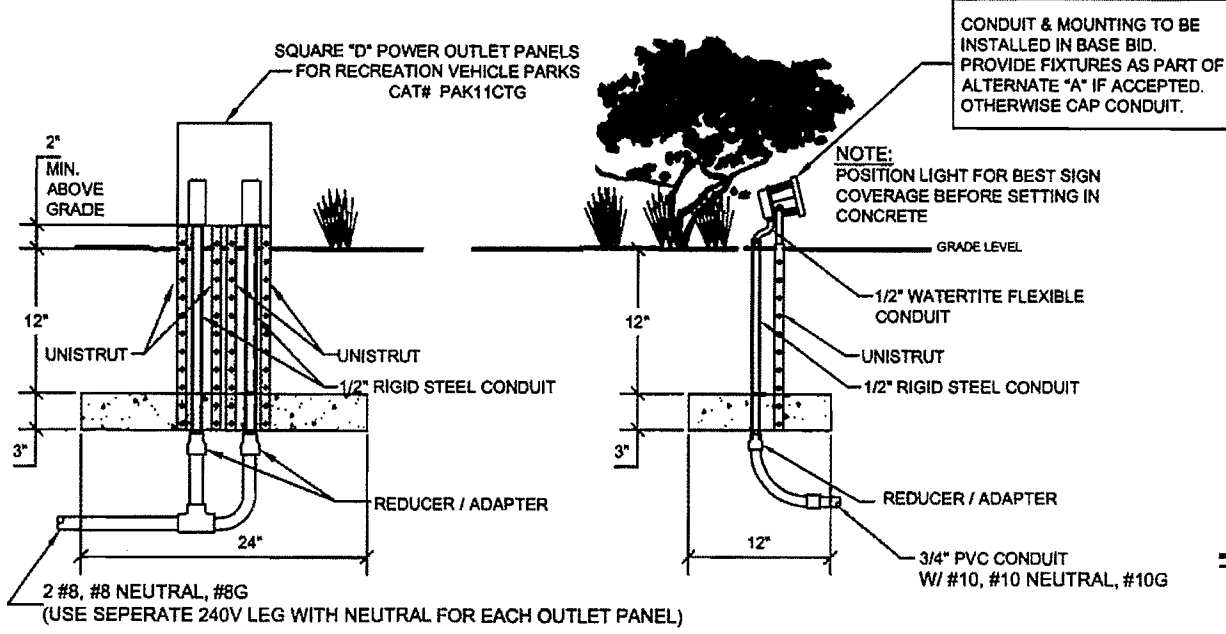


2 CONCRETE PIER W / BRICK VENEER
L6 PLAN / SECTION
SCALE: 3/8" = 1'-0"



3 CONCRETE MONUMENT WALL
L6 SECTION
SCALE: 3/8" = 1'-0"

**ALTERNATE 'A' - MONUMENT WALL
FOOTING AND REINFORCEMENT DETAILS**



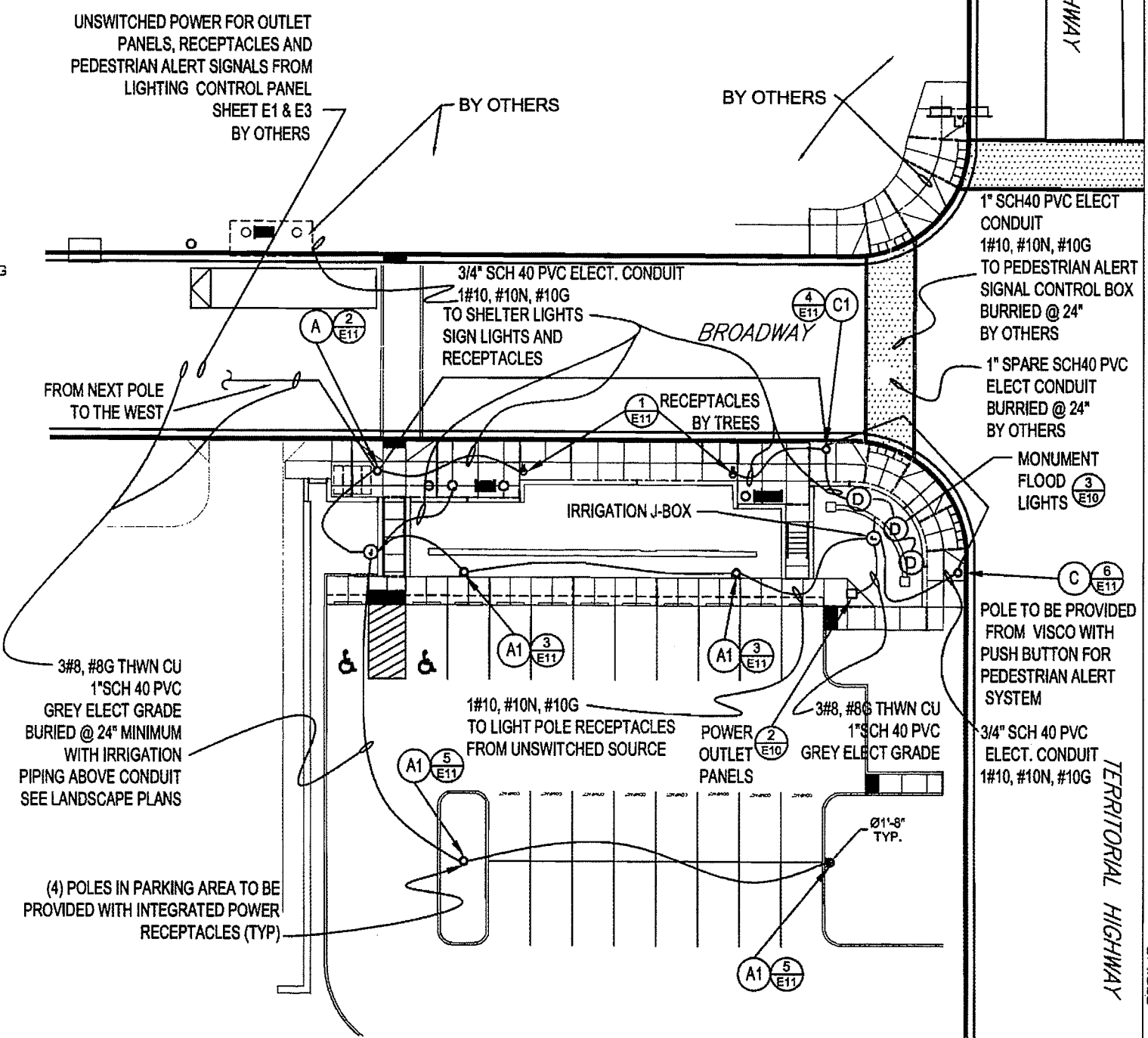
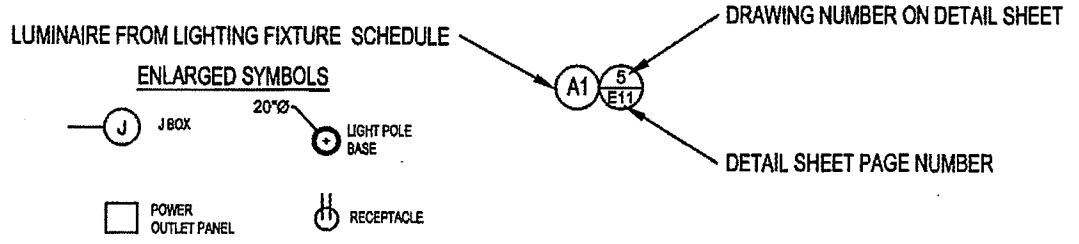
2 DETAIL @ POWER OUTLET PANELS

3 DETAIL @ FLOOD LIGHTS

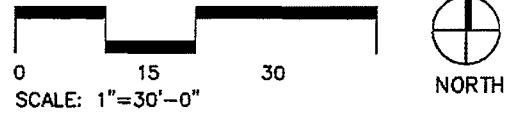
LIGHTING FIXTURE SCHEDULE				
TYPE	DESCRIPTION	MANUFACTURER	LAMP	NOTES
A	SINGLE LED LUMINAIRE ON A 12' POLE	VISCO	3,500 LUMENS 50 WATT 6000K	MOUNTING: TENON MOUNT VOLTAGE: 240 FINISH: BLACK CAT#VI-B17-1-F/12'-50LED-424-V-LV-1BA-AB BANNER ARMS / BASKETS PER CITY
A1	SINGLE LED LUMINAIRE ON A 12' POLE WITH INTEGRATED POWER RECEPTACLE	VISCO	3,500 LUMENS 50 WATT 6000K	MOUNTING: TENON MOUNT VOLTAGE: 240 FINISH: BLACK CAT#VI-B17-1-F/12'-50LED-424-V-LV-1BA-AB BANNER ARMS / BASKETS PER CITY
C	DOUBLE LED LUMINAIRES ON A 16' POLE WITH BUTTON FOR PEDESTRIAN ALERT SYSTEM	VISCO	7,000 LUMENS 100 WATT 6000K	MOUNTING: TENON MOUNT VOLTAGE: 240 FINISH: BLACK CAT#VI-B17-A2-F/16'-50LED-424-V-LL-2BA-AB BANNER ARMS / BASKETS PER CITY
C1	SINGLE LED LUMINAIRES ON A 16' POLE	VISCO	3,500 LUMENS 50 WATT 6000K	MOUNTING: TENON MOUNT VOLTAGE: 240 FINISH: BLACK CAT#VI-B17-1-F/16'-50LED-424-V-LL-2BA-AB BANNER ARMS / BASKETS PER CITY
D	LED SIGN FLOOD LIGHT PROVIDE FIXTURES AS PART OF ALTERNATE "A" IF ACCEPTED.	BCGT	10 WATT	MOUNTING: BELOW GRADE VOLTAGE: 120/240 FINISH: ALUMINUM CAT# THA-285A-10

NOTE 1: SEE POLE BASE DETAILS FOR CONCRETE POLE BASE
NOTE 2: ALL POLES TO BE PROVIDED BY THE CITY

DETAIL & LUMINAIRE LEGEND

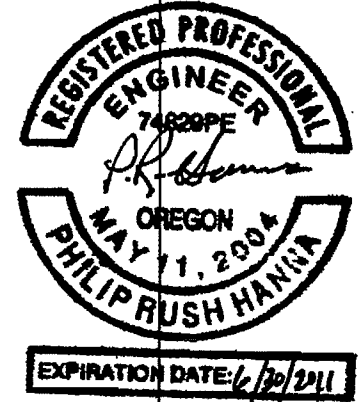


LTD - VENETA TRANSIT CENTER



HANNA
ENGINEERING
ELECTRICAL CONSULTING
408 SOUTH OREGON DR.
VENETA, OREGON 97159
PHONE: 503-251-7700
FAX: 503-251-7800

DOWNTOWN DEVELOPMENT
City of Veneta
VENETA, OREGON



DATE: 05.05.2010
TYPE: LIGHTING DETAILS
SCALE: AS NOTED
DRN BY: MSA
REVISION:
ISSUE 1

SHEET:
E10